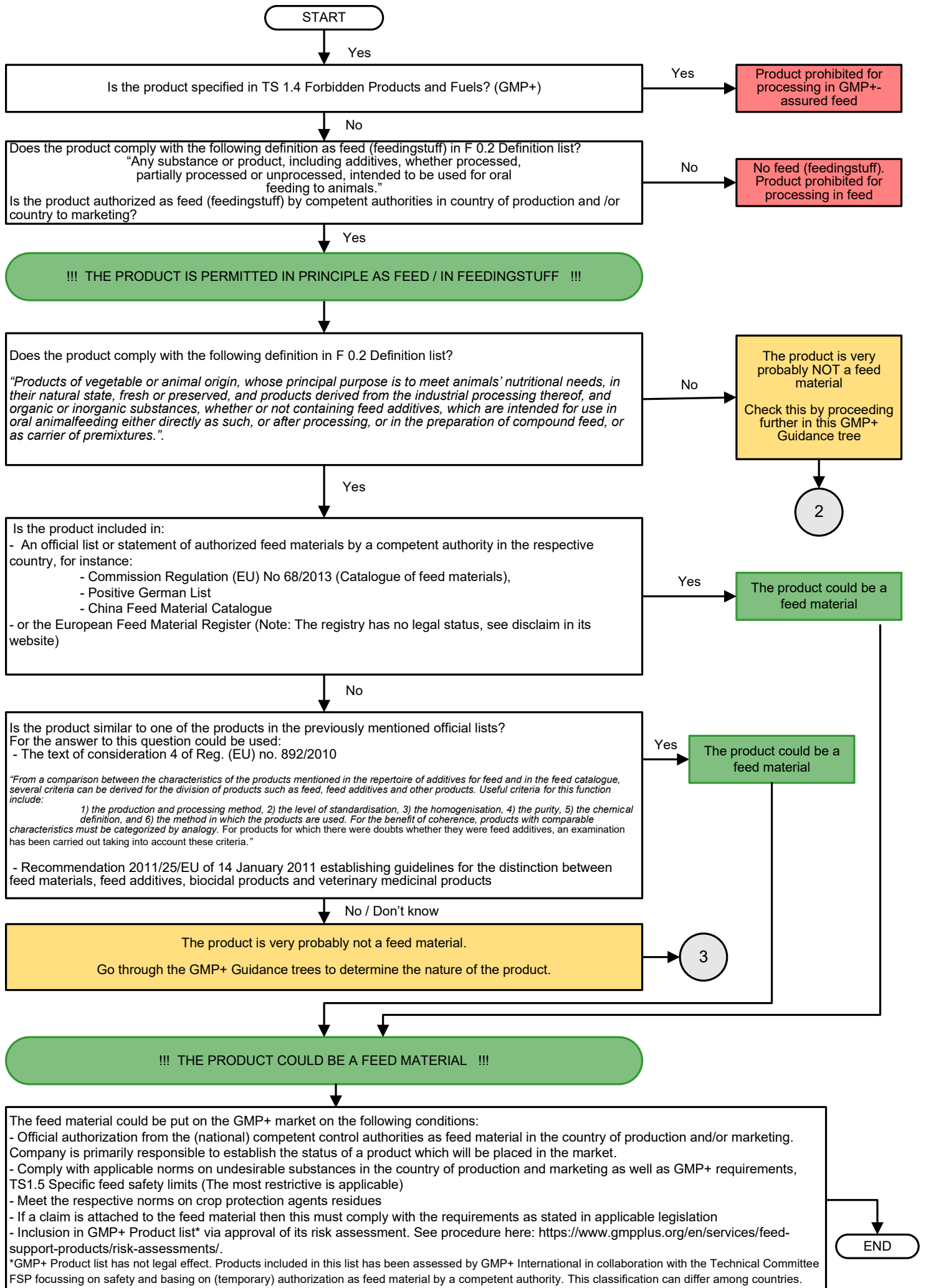


GMP+ Guidance tree



GMP+ Guidance tree

2

!!! THE PRODUCT CAN BE USED IN FEEDINGSTUFF BUT IS NOT VERY PROBABLY A FEED MATERIAL !!!

Does the product comply with the following definition in F 0.2 Definition list?

“Mixture of at least two feed materials, whether or not containing feed additives, for oral animal-feeding in the form of complete or complementary feed.”

NOTE

If in a mixture of 2 feed materials the level on one feed material is a maximum of 3% and this feed material serves to bind the other feed material and/or to denaturise it, then the mix could be still considered to be a feed material, check legal requirements (Reg. (EC) no. 767/2009, Appendix I sub 4)

Yes

The product is a compound feed

Type of compound feed:
- Complete feed
- Milk replacers
- Complementary feed (including mineral feeds)

No

Does the product comply with the following definition in F 0.2 Definition list ?

“Substances, micro-organisms or preparations, other than feed material and premixtures, which are intentionally added to feed or water in order to perform, in particular, one or more of the following functions. The feed additive shall:

- a) favourably affect the characteristics of feed,
- b) favourably affect the characteristics of animal products,
- c) favourably affect the colour of ornamental fish and birds,
- d) satisfy the nutritional needs of animals,
- e) favourably affect the environmental consequences of animal production,
- f) favourably affect animal production, performance or welfare, particularly by affecting the gastro-intestinal flora or digestibility of feedingstuffs,
- g) have a coccidiostatic or histomonostatic effect”

Yes

The product is a feed additive

!! IMPORTANT!!

The marketing and use of feed additives is strictly regulated

Check whether the feed additive is permitted in specific country.

For instance, check specific requirements in EU for Placing the additives on the EU and EEA market. Use the Community Register of Feed Additives for this (https://food.ec.europa.eu/safety/animal-feed/feed-additives/eu-register_en)

No

Does the product comply with the following definition in F 0.2 Definition list?

“Mixtures of feed additives or mixtures of one or more feed additives with feed materials or water used as carriers, not intended for direct feeding to animals”

Yes

The product is a premixture

No

The product is very probably not a feed.

Go through the GMP+ Guidance tree to determine the nature of the product.

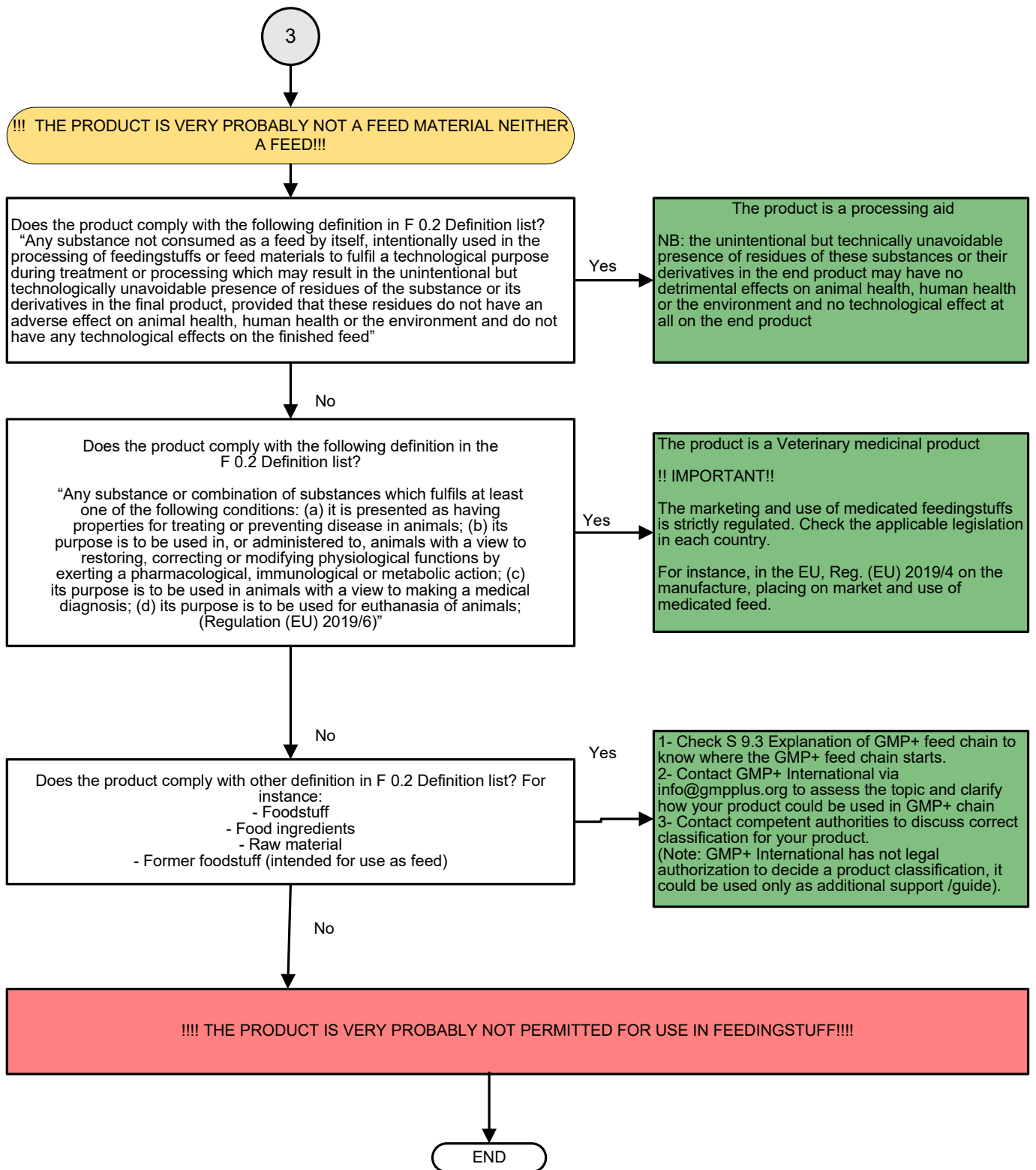
3

The feed could be put on the market on the following conditions:

- Comply with applicable norms on undesirable substances In the country of production and marketing as well as GMP+ requirements, TS 1.5 Specific feed safety limits are not exceeded (the most restrictive is applicable)
- Meet the respective norms on crop protection agents residues
- If a claim is attached to the product then, this must comply with the requirements as stated in applicable legislation

END

PRODUCTS IN FEED – GMP+ Guidance tree



DISCLAIMER

These GMP+ Guidance trees have been created with the greatest possible care. The GMP+ Guidance trees contain references to various relevant elements of the legislation and regulations. Additional information on those legislations and regulations is available in www.feedlegislation.org. Anyone who markets feeds and/or products for processing in feeds is subject to all the applicable legislation and regulations. The user may derive no rights from these GMP+ Guidance trees. GMP+ International BV is not liable for any claim or loss of income as a result of the use of these GMP+ Guidance trees.