



PRODUCTSCHAP DIERVOEDER

## **GMP<sup>+</sup> Certification Scheme Animal Feed Sector 2006**

### **Product standards (Including Residue Standards)**

#### **Appendix 1**

© Productschap Diervoeder (The Hague, the Netherlands)

All rights reserved. The information in this publication may be consulted on the screen, downloaded and printed as long as this is done for your own, non-commercial use. For other desired uses prior written permission should be obtained from the Product Board Animal Feed.

Adopted by the Central College of Experts for the Animal Feed Sector	23 October 2009
Approved by the Executive Committee of the Product Board Animal Feed	--
Publication / Version	5 November 2009
Effective date	5 November 2009

## Table of contents

<b>PART A: PRODUCT NORMS</b> .....	<b>3</b>
<b>1. INTRODUCTION TO THE PRODUCT NORMS</b> .....	<b>3</b>
<b>2. CONDITIONS</b> .....	<b>3</b>
<b>3. SUMMARY OF STATUTORY AND SUPPLEMENTARY GMP<sup>+</sup> PRODUCT NORMS FOR THE ANIMAL FEED SECTOR</b> .....	<b>3</b>
<b>4. RESIDUE LEVELS OF PESTICIDES IN FEEDS</b> .....	<b>30</b>
4.1 INTRODUCTION.....	30
4.2 THE ESTABLISHMENT OF AN MRL .....	30
4.3 SPECIAL REQUIREMENTS .....	36
<b>PART B: RESIDUE NORMS</b> .....	<b>37</b>
<b>1. INTRODUCTION</b> .....	<b>37</b>
<b>2. ADDITIONAL PROVISIONS</b> .....	<b>38</b>
2.1 GENERAL.....	38
2.2 COMPOUND FEED .....	39
2.2.1 <i>Installation carry-over level:</i> .....	39
2.2.2 <i>The coefficient</i> .....	39
2.2.3 <i>Carry-over and flush batches</i> .....	40
2.2.4 <i>Items for attention and other remarks</i> .....	40
2.3 PREMIX.....	41
2.3.1 <i>General</i> .....	41
2.3.2 <i>Direct contamination</i> .....	41
2.3.3 <i>Indirect contamination</i> .....	41
<b>3. RESIDUE NORMS FOR CRITICAL ADDITIVES</b> .....	<b>42</b>
3.1 SUMMARY OF RESIDUE NORMS FOR COCCIDIOSTATS AND HISTOMONOSTATS ACCORDING TO DIRECTIVE 2002/32/EC AMENDING ANNEX I TO DIRECTIVE 2002/32/EC.....	42
3.2 ADDITIONAL INFORMATION FOR SOME COCCIDIOSTATS AND HISTOMONOSTATS .....	46
<b>4. RESIDUE NORMS FOR CRITICAL VETERINARY MEDICAL PRODUCTS</b> .....	<b>47</b>
4.1 SUMMARY OF RESIDUE NORMS FOR CRITICAL VETERINARY MEDICAL PRODUCTS .....	47
4.2 ADDITIONAL INFORMATION PER CRITICAL VETERINARY MEDICAL PRODUCT .....	48

# PART A: PRODUCT NORMS

## 1. INTRODUCTION TO THE PRODUCT NORMS

There are references in the various GMP<sup>+</sup> standards to the product norms.

This part of this appendix contains the statutory and GMP<sup>+</sup> norms with respect to contaminants. The product norms included in this appendix are

- a. based on the statutory norms for products in the European Union or nationally (the Netherlands), or
- b. as determined within the framework of the GMP<sup>+</sup> Certification Scheme for the Animal Feed Sector 2006 in consultation with the subsequent links in the animal production chain.

The following standards apply in addition to those in the tables:  
the list of permitted additives in the Netherlands in accordance with Directive (EC) No. 1831/2003 and the residue norms in part B of this appendix.

**DISCLAIMER:** The Product Board Animal Feed has adopted this list in order to inform interested parties with respect to the norms in the legislation (European Union and national) and additional GMP<sup>+</sup> norms. The list will be regularly updated. The Product Board Animal Feed is not liable for any errors in this list.

## 2. CONDITIONS

In arriving at the standards a distinction has been made between action and rejection limits. The action limits for undesirable contaminants is appreciably lower than the rejection limit.

Action limit: A feasible limit agreed in consultation with the sector, supplier or customer. Where the **action limit** is exceeded an investigation must be carried out into the:

- source of the contamination and measures must be taken to
- remove or limit the source of the contamination.

Rejection limit: A feasible limit agreed in consultation with the sector, supplier or customer. If the **rejection limit** is exceeded then the product is not suitable for use as a feed material or animal feed.

In the various GMP<sup>+</sup> standards it is stated that the participant must ensure that deviations (in the product or process) from the requirements in this standard are recorded and controlled in order to prevent unintentional use or delivery of the product.

Norm for mixes of feed materials which are marketed as “feed material on carrier”:

The norm for the maximum level of undesirable substances is calculated proportionately from the norm for the individual components. This calculation principle is also applied for the calculation of the norm for pesticides for compound feeds (see section 4.2.4 question no. 5).

### 3. SUMMARY OF STATUTORY AND SUPPLEMENTARY GMP<sup>+</sup> PRODUCT NORMS FOR THE ANIMAL FEED SECTOR

	Contaminant	Product	Action limit <sup>(1)</sup>	Rejection limit <sup>(1)</sup>	Source	Supplementary requirements	Analysis method <sup>7</sup>
<b>Microbiological</b>							
M1	Antibacterial inhibition	- Feed materials of animal origin for delivery to livestock farmers, and  - Wet mixes of animal origin for delivery to cattle farmers	-	< 15 mm	GMP	According to the 5-plate test MB003, derived from EG-4-plate test, product basis (RIVM report no. 206; Archiv für Lebensmittelhygiene 31 (1981) page 97-140.	OZM Part 1; O-1
M3	Enterobacteriaceae	Feed for pets and dog bones	-	300 kve/gram	Reg. 1774/2002	n = 5, c = 2, m = 10, M = 300 in 1 gram , <sup>14</sup> Tinned feed for pets which has been subjected to heat treatment with a Fc value of at least 3  does not necessarily have to be sampled and tested for <i>Salmonella</i> and <i>Enterobacteriaceae</i> .	OZM Part 2; M-3
M4a	Salmonella	Consumption chick feed: end products and feed materials for: - Top breeding consumption chicks  - Breeding increase consumption chicks  - Increase consumption chicks  - Consumption chicks	- - - -	0 <sup>+</sup> % <sup>20</sup> (approaching 0%) 0 <sup>+</sup> % <sup>20</sup> (approaching 0%) 0 <sup>+</sup> % <sup>20</sup> (approaching 0%) 0 <sup>+</sup> % <sup>20</sup> (approaching 0%)	GMP		OZM Part 2; M-2a to M2e
		Laying poultry feed: end products and feed materials for: - Top breeding laying poultry	-	0 <sup>+</sup> % <sup>20</sup> (approaching 0%)			

	Contaminant	Product	Action limit <sup>(1)</sup>	Rejection limit <sup>(1)</sup>	Source	Supplementary requirements	Analysis method'
<b>Microbiological</b>							
		<ul style="list-style-type: none"> <li>- Raising increase laying poultry</li> <li>- Increase laying poultry</li> <li>- Laying-hens and breeding hens</li> </ul>	<ul style="list-style-type: none"> <li>-</li> <li>-</li> <li>1%</li> </ul>	<ul style="list-style-type: none"> <li>0+% <sup>20</sup>(approaching 0%)</li> <li>0+% <sup>20</sup>(approaching 0%)</li> <li>0+% <sup>20</sup>(approaching 0%) for S. enteritidis and S. typhimurium</li> </ul>			
		Turkey feed: end products and feed materials for:			GMP		
		<ul style="list-style-type: none"> <li>- Raising increase turkeys</li> <li>- Increase turkeys</li> <li>- Consumption turkeys</li> </ul>	<ul style="list-style-type: none"> <li>-</li> <li>-</li> <li>-</li> </ul>	<ul style="list-style-type: none"> <li>0+% <sup>20</sup>(approaching 0%)</li> <li>0+% <sup>20</sup>(approaching 0%)</li> <li>0+% <sup>20</sup>(approaching 0%)</li> </ul>			
		Other animal feeds, feed materials and wet mixes intended for cattle farms (except for poultry feeds).	-	Absent in 25 gr	GMP		
		Feed for pets and dog bones	-	Absent in 25 gr	Reg. 1774/2002	n = 5, c = 0, m = 0, M = 0 <sup>14</sup> Tinned feed for pets which has been subjected to heat treatment with a Fc value of at least 3  does not necessarily have to be sampled and tested for <i>Salmonella</i> and <i>Enterobacteriaceae</i> .	
M4b	Salmonella preservation determined through pH	<ul style="list-style-type: none"> <li>- Feed materials for delivery to cattle farms, and</li> <li>- Wet mixes for delivery to livestock farmers on the basis of:</li> </ul>		Maximum pH for guarantee:	GMP	If preservation can be achieved at a higher pH then this should be supported with data.	OZM Part 2; M-5

	Contaminant	Product	Action limit <sup>(1)</sup>	Rejection limit <sup>(1)</sup>	Source	Supplementary requirements	Analysis method'
<b>Microbiological</b>							
		<ul style="list-style-type: none"> <li>- Spontaneous lactic acid fermentation</li> <li>- Add organic acids</li> <li>- Add anorganic acids</li> </ul>	-	4,5 4 3,5		<p>These norms do not apply if the products are supplied at a temperature of at least 60°C and the supplier is demonstrably informed of the storage conditions.</p> <p>The absence of Salmonella can also be shown in heat-treated wet mixes and feed materials (&lt;13% moisture) through compliance with the norms for Enterobacteriaceae,</p>	
M5	Moulds	<ul style="list-style-type: none"> <li>- Feed materials for delivery to cattle farms, and</li> <li>- Wet mixes for delivery to cattle farmers</li> </ul> <p>with an Aw value &gt; 0.75 (if this is not known then a moisture content &gt; 13%)</p>	-	10,000 kve/gram	GMP		OZM Part 2; M-4
<b>Chemical</b>							
C1	Aflatoxin B1	Feed materials intended for (direct) delivery to dairy farmers	-	0.005 mg/kg	GMP		OZM Part 2; OSP1a to 1e
		All feed materials	-	0.02 mg/kg	Directive 2003/100/EEG amending Directive 2002/32/EEG		
		Complete animal feeds for cattle, sheep and goats with the exception of:	-	0.02 mg/kg			
		<ul style="list-style-type: none"> <li>- dairy cattle</li> <li>- calves and lambs</li> </ul>	-	0.005 mg/kg 0.01 mg/kg			
		Complete animal feeds for pigs and poultry (with the exception of young animals)	-	0.02 mg/kg			

	Contaminant	Product	Action limit <sup>(1)</sup>	Rejection limit <sup>(1)</sup>	Source	Supplementary requirements	Analysis method'
<b>Chemical</b>							
		Other complete animal feeds	-	0.01 mg/kg			
		Supplementary animal feeds for cattle, sheep and goats (with the exception of supplementary animal feeds for dairy cattle, calves, lambs)	-	0.02 mg/kg			
		Supplementary animal feeds for pigs and poultry (with the exception of young animals)	-	0.02 mg/kg			
		Other supplementary animal feeds	-	0.005 mg/kg			
C2	Aldrin } separately } or } jointly Dieldrin } expressed in } dieldrin	all animal feeds, with the exception of:  - fats and oils, - fish feed	-	0.01 mg/kg  0,1 mg/kg 0.2 mg/kg	Directive 2002/32/EG  Directive 2006/77/EEG amending Directive 2002/32/EEG		OZM Part 2; OSP-11
C3	Arsenic <sup>16</sup>	Feed materials, with the exception of:  - ground grass meal, alfalfa meal and clover meal and also molassed and unmolassed dried sugar beet pulp  - Palm kernel flakes  - phosphates and limestone  - calcium carbonate  - magnesium oxide	- - - - - -	2 mg/kg 4 mg/kg 4 mg/kg <sup>15</sup> 10 mg/kg 15 mg/kg 20 mg/kg	Directive 2003/100/EEG amending Directive 2002/32/EEG		OZM Part 2; OSP-26

	Contaminant	Product	Action limit <sup>(1)</sup>	Rejection limit <sup>(1)</sup>	Source	Supplementary requirements	Analysis method <sup>2</sup>
<b>Chemical</b>							
		- animal feeds obtained by processing fish or other sea creatures	-	15 mg/kg <sup>15</sup>			
		- ground dried seaweed and feed materials on the basis of seaweed	-	40 mg/kg <sup>15</sup>			
		complete animal feeds, with the exception of:	-	2 mg/kg			
		- complete fish feed and complete animal feed for fur-bearing animals	-	6 mg/kg <sup>15</sup>			
		complete animal feeds, with the exception of:	-	4 mg/kg			
		- mineral mixes	-	12 mg/kg			
C4	Prussic acid	Feed materials, with the exception of:	-	50 mg/kg	Directive 2002/32/EG		OZM Part 2; OSP-9
		- linseed	-	250 mg/kg			
		- linseed cake	-	350 mg/kg			
		- cassava products and almond cake,	-	100 mg/kg			
		complete animal feeds, with the exception of:	-	50 mg/kg			
		- complete animal feeds for chicks	-	10 mg/kg			
C5	Biogenic amines*	- Animal feeds > 30% crude protein	-	4,000 mg/kg. protein	GMP	* In as far as these are created by decay due to protein decay and are not the consequence of the normal processing of the product	OZM Part 2; OSP-23
C6	Cadmium <sup>2</sup>	Feed materials of vegetable origin,	-	1 mg/kg	Directive 2005/87/EEG amending Directive 2002/32/EEG		OZM Part 2; OSP-27
		Feed materials of animal origin	-	2 mg/kg			
		Feed materials of mineral origin, with the exception of:	-	2 mg/kg			
		- phosphates	-	10 mg/kg			

	Contaminant	Product	Action limit <sup>(1)</sup>	Rejection limit <sup>(1)</sup>	Source	Supplementary requirements	Analysis method'
<b>Chemical</b>							
		Feed additives, belonging to the functional group "Compounds of trace elements", with the exception of:  - copper oxide, manganese (II)oxide, zinc oxide and manganese (II) sulphate-monohydrate	-	10 mg/kg			
			-	30 mg/kg <sup>8</sup>			
		Feed additives belonging to the functional group "Binding agents and thinners"	-	2 mg/kg			
		Premixes	-	15 mg/kg <sup>8</sup>			
		Mineral mixes - containing < 7% phosphorus - containing ≥ 7% phosphorus	-	5 mg/kg			
			-	0.75 mg/kg per 1% phosphorus, with a maximum of 7.5 mg/kg			
		Additional animal feeds for pets	-	2 mg/kg			
		Other supplementary animal feeds	-	0.5 mg/kg			
		Complete animal feeds for cattle, sheep and goats and fish feed with the exception of:  - complete pet feeds - complete animal feeds for calves, lambs and goat lambs and other complete animal feeds	-	1 mg/kg			
			-	2 mg/kg			
			-	0.5 mg/kg			
C7	<u>Chlorine</u> Chloride	- Feed materials for delivery to cattle farms, and  - Wet mixes for delivery to cattle farmers	10 g/kg (dry matter)	10x the action limit (dry matter) <sup>21</sup>	GMP	If the action limit is exceeded then a warning or processing advice must be demonstrably communicated to the customer.	OZM deel 2; OSP-22

	Contaminant	Product	Action limit <sup>(1)</sup>	Rejection limit <sup>(1)</sup>	Source	Supplementary requirements	Analysis method <sup>7</sup>
<b>Chemical</b>							
C8	Chlorocamphene (toxaphene) – sum of the indicators CHB 26, 50 and 62 <sup>7</sup>	Fish, other sea creatures and (by)products thereof with the exception of fish oil	-	0.02 mg/kg	Directive 2005/86/EEG amending Directive 2002/32/EEG		OZM Part 2; OSP-11
		- fish oil <sup>b</sup>	-	0.2 mg/kg			
		- fish food <sup>b</sup>	-	0.05 mg/kg			
C9	Chlordane (sum of cis- en transisomers and of oxychlordane expressed in Chlordane)	all animal feeds, with the exception of:	-	0.02 mg/kg	Directive 2002/32/EG		OZM Part 2; OSP-11
		- fats and oils	-	0.05 mg/kg	Directive 2006/77/EEG amending Directive 2002/32/EEG		
C10	Crotalaria spp.	All animal feeds	-	100 mg/kg	Directive 2002/32/EG		Microscopic determination in accordance with the instructions of the manufacturer
C11	DDT (sum of DDT-, DDD- (or TDE-) and DDE-isomers, expressed in DDT)	all animal feeds, with the exception of:	-	0.05 mg/kg	Directive 2008/76/EEG amending Directive 2002/32/EEG		OZM Part 2; OSP-11
		- fats en oils	-	0.5 mg/kg			
C12	Animal proteins	Animal feeds for productive livestock	-	0	Regulation (EC) no. 1234/2003 to amend 999/2001/EG	See GMP+ Appendix 3: Negative list	OZM Part 2; OSP-12
C13a	Dioxin <sup>11+18</sup>	Feed materials of vegetable origin with the exception of vegetable oils and their by-products	0.5 ng WHO-PCDD/F-TEQ/kg <sup>4+17</sup>	0.75 ng WHO-PCDD/F-TEQ/kg <sup>4+5</sup>	Directive 2006/13/EG to amend Directive 2002/32/EEG	In the event of exceeding the action limit: Determination of the source of the contamination. Once the source of the contamination has been established take, if possible, suitable measures to reduce or eliminate this	OZM Part 2; OSP-18

	Contaminant	Product	Action limit <sup>(1)</sup>	Rejection limit <sup>(1)</sup>	Source	Supplementary requirements	Analysis method <sup>7</sup>
<b>Chemical</b>							
		Vegetable oils and their by-products	0.5 ng WHO-PCDD/F-TEQ/kg <sup>4+17</sup>	0.75 ng WHO-PCDD/F-TEQ/kg <sup>4+5</sup>		In the event of exceeding the action limit: Determination of the source of the contamination. Once the source of the contamination has been established take, if possible, suitable measures to reduce or eliminate this	
		Feed materials of mineral origin	0.5 ng WHO-PCDD/F-TEQ/kg <sup>4+17</sup>	1.0 ng WHO-PCDD/F-TEQ/kg <sup>4+5</sup>		In the event of exceeding the action limit: Determination of the source of the contamination. Once the source of the contamination has been established take, if possible, suitable measures to reduce or eliminate this	
		Animal fat including milk fat and egg fat	1.0 ng WHO-PCDD/F-TEQ/kg <sup>4+17</sup>	2.0 ng WHO-PCDD/F-TEQ/kg <sup>4+5</sup>		In the event of exceeding the action limit: Determination of the source of the contamination. Once the source of the contamination has been established take, if possible, suitable measures to reduce or eliminate this	
		Products from other than land animals including milk, milk products, eggs and products from eggs	0,5 ng WHO-PCDD/F-TEQ/kg <sup>4+17</sup>	0,75 ng WHO-PCDD/F-TEQ/kg <sup>4+5</sup>		In the event of exceeding the action limit: Determination of the source of the contamination. Once the source of the contamination has been established take, if possible, suitable measures to reduce or eliminate this	

	Contaminant	Product	Action limit <sup>(1)</sup>	Rejection limit <sup>(1)</sup>	Source	Supplementary requirements	Analysis method <sup>7</sup>
<b>Chemical</b>							
		Fish oil	5.0 ng WHO-PCDD/F-TEQ/kg <sup>4+17</sup>	6.0 ng WHO-PCDD/F-TEQ/kg <sup>4+5</sup>		<p>In the event of exceeding the action limit: In many cases it may perhaps not be necessary to carry out an investigation into the source of the contamination as the background level in some areas is close or above the action level.</p> <p>If the action limit is really exceeded then all the details such as the sampling period, geographical origin, fish species, etc., should be recorded with a view to future measures for the presence of dioxins and dioxin-like compounds in these animal feeds</p>	
		Fish, other sea creatures and their (subsidiary) products , with the exception of fish oil and fish protein hydrolysates which contain more than 20% fat <sup>6</sup>	1.0 ng WHO-PCDD/F-TEQ/kg <sup>4+17</sup>	1.25 ng WHO-PCDD/F-TEQ/kg <sup>4+5</sup>			
		Fish protein hydrolysates which contain more than 20% fat <sup>6</sup>	1.75 ng WHO-PCDD/F-TEQ/kg <sup>4+17</sup>	2.25 ng WHO-PCDD/F-TEQ/kg <sup>4+5</sup>			
		Fish food Feeds for pets	1.75 ng WHO-PCDD/F-TEQ/kg <sup>4+17</sup>	2.25 ng WHO-PCDD/F-TEQ/kg <sup>4+5</sup>			
		The feed additives kaolinite-bearing clay, calcium sulphate hydrate, vermiculite, natrolite phonolite, synthetic calcium aluminates and clinoptilolite of sedimentary origin, belonging to the functional group "Binding agents and thinners"		0.75 ng WHO-PCDD/F-TEQ/kg <sup>4+5</sup>			
		Feed additives belonging to the functional group "Binding agents and thinners"	0.5 ng WHO-PCDD/F-TEQ/kg <sup>4+17</sup>				<p>In the event of exceeding the action limit: Determination of the source of the contamination. Once the source of the contamination has been established take, if possible, suitable measures to reduce or eliminate this</p>

	Contaminant	Product	Action limit <sup>(1)</sup>	Rejection limit <sup>(1)</sup>	Source	Supplementary requirements	Analysis method <sup>7</sup>
<b>Chemical</b>							
		Feed additives belonging to the functional group "Trace elements compounds"	0.5 ng WHO-PCDD/F-TEQ/kg <sup>4+17</sup>	1.0 ng WHO-PCDD/F-TEQ/kg <sup>4+5</sup>		In the event of exceeding the action limit: Determination of the source of the contamination. Once the source of the contamination has been established take, if possible, suitable measures to reduce or eliminate this	
		Premixes	0.5 ng WHO-PCDD/F-TEQ/kg <sup>4+17</sup>	1.0 ng WHO-PCDD/F-TEQ/kg <sup>4+5</sup>		In the event of exceeding the action limit: Determination of the source of the contamination. Once the source of the contamination has been established take, if possible, suitable measures to reduce or eliminate this	
		Compound feeds with the exception of feeds for fur-bearing animals and pets and of fishfeed	0.5 ng WHO-PCDD/F-TEQ/kg <sup>4+17</sup>	0.75 ng WHO-PCDD/F-TEQ/kg <sup>4+5</sup>		In the event of exceeding the action limit: Determination of the source of the contamination. Once the source of the contamination has been established take, if possible, suitable measures to reduce or eliminate this	
C13b	Sum of dioxins and dioxin-like PCBs <sup>12+18</sup>	Feed materials of vegetable origin with the exception of vegetable oils and their by-products		1.25 ng WHO-PCDD/F-PCB-TEQ/kg <sup>4</sup>			OZM Part 2; OSP-18
		Vegetable oils and their by-products		1.5 ng WHO-PCDD/F-PCB-TEQ/kg <sup>4</sup>			
		Feed materials of mineral origin		1.5 ng WHO-PCDD/F-PCB-TEQ/kg <sup>4</sup>			
		Animal fat including milk fat and egg fat		3.0 ng WHO-PCDD/F-PCB-TEQ/kg <sup>4</sup>			

	Contaminant	Product	Action limit <sup>(1)</sup>	Rejection limit <sup>(1)</sup>	Source	Supplementary requirements	Analysis method <sup>7</sup>
<b>Chemical</b>							
		Products from other than land animals including milk, milk products, eggs and products from eggs		1.25 ng WHO-PCDD/F-PCB-TEQ/kg <sup>4</sup>			
		Fish oil		24.0 ng WHO-PCDD/F-PCB-TEQ/kg <sup>4</sup>			
		Fish, other sea creatures and their (subsidiary) products , with the exception of fish oil and fish protein hydrolysates which contain more than 20% fat <sup>6</sup>		4.5 ng WHO-PCDD/F-PCB-TEQ/kg <sup>4</sup>			
		Fish protein hydrolysates which contain more than 20% fat		11 ng WHO-PCDD/F-PCB-TEQ/kg <sup>4</sup>			
		Feed additives belonging to the functional group "Binding agents and thinners"		1.5 ng WHO-PCDD/F-PCB-TEQ/kg <sup>4</sup>			
		Feed additives belonging to the functional group "Trace elements compounds"		1.5 ng WHO-PCDD/F-PCB-TEQ/kg <sup>4</sup>			
		Premixes		1.5 ng WHO-PCDD/F-PCB-TEQ/kg <sup>4</sup>			
		Compound feed with the exception of feeds for fur-bearing animals and pets and of fishfeed		1.5 ng WHO-PCDD/F-PCB-TEQ/kg <sup>4</sup>			
		Fish food Feeds for pets		7.0 ng WHO-PCDD/F-PCB-TEQ/kg <sup>4</sup>			

	Contaminant	Product	Action limit <sup>(1)</sup>	Rejection limit <sup>(1)</sup>	Source	Supplementary requirements	Analysis method <sup>7</sup>
<b>Chemical</b>							
C13c	Dioxin-like PCBs <sup>19 +18</sup>	Feed materials of vegetable origin with the exception of vegetable oils and their by-products	0.35 ng WHO-PCB-TEQ/kg <sup>4 + 17</sup>			In the event of exceeding the action limit: Determination of the source of the contamination. Once the source of the contamination has been established take, if possible, suitable measures to reduce or eliminate this	OZM Part 2; OSP-18
		Vegetable oils and their by-products	0.5 ng WHO-PCB-TEQ/kg <sup>4 + 17</sup>			In the event of exceeding the action limit: Determination of the source of the contamination. Once the source of the contamination has been established take, if possible, suitable measures to reduce or eliminate this	
		Feed materials of mineral origin	0.35 ng WHO-PCB-TEQ/kg <sup>4 + 17</sup>			In the event of exceeding the action limit: Determination of the source of the contamination. Once the source of the contamination has been established take, if possible, suitable measures to reduce or eliminate this	
		Animal fat including milk fat and egg fat	0.75 ng WHO-PCB-TEQ/kg <sup>4 + 17</sup>			In the event of exceeding the action limit: Determination of the source of the contamination. Once the source of the contamination has been established take, if possible, suitable measures to reduce or eliminate this	

	Contaminant	Product	Action limit <sup>(1)</sup>	Rejection limit <sup>(1)</sup>	Source	Supplementary requirements	Analysis method <sup>2</sup>
<b>Chemical</b>							
		Products from other than land animals including milk, milk products, eggs and products from eggs	0.35 ng WHO-PCB-TEQ/kg <sup>4</sup> + 17			In the event of exceeding the action limit: Determination of the source of the contamination. Once the source of the contamination has been established take, if possible, suitable measures to reduce or eliminate this	
		Fish oil	14.0 ng WHO-PCB-TEQ/kg <sup>4</sup> + 17			In the event of exceeding the action limit: In many cases it may perhaps not be necessary to carry out an investigation into the source of the contamination as the background level in some areas is close or above the action level.	
		Fish, other sea creatures and their (subsidiary) products , with the exception of fish oil and fish protein hydrolysates which contain more than 20% fat	2.5 ng WHO-PCB-TEQ/kg <sup>4</sup> + 17			If the action limit is really exceeded then all the details such as the sampling period, geographical origin, fish species, etc., should be recorded with a view to future measures for the presence of dioxins	
		Fish protein hydrolysates which contain more than 20% fat	7.0 ng WHO-PCB-TEQ/kg <sup>4</sup> + 17				
		Fish food Feeds for pets	3.5 ng WHO-PCB-TEQ/kg <sup>4</sup> + 17			and dioxin-like compounds in these animal feeds	
		Feed additives belonging to the functional group "Binding agents and thinners"	0.5 ng WHO-PCB-TEQ/kg <sup>4</sup> + 17			In the event of exceeding the action limit: Determination of the source of the contamination. Once the source of the contamination has been established take, if possible, suitable measures to reduce or eliminate this	

	Contaminant	Product	Action limit <sup>(1)</sup>	Rejection limit <sup>(1)</sup>	Source	Supplementary requirements	Analysis method <sup>1</sup>
<b>Chemical</b>							
		Feed additives belonging to the functional group "Trace elements compounds"	0.35 ng WHO-PCB-TEQ/kg <sup>4</sup> + 17			In the event of exceeding the action limit: Determination of the source of the contamination. Once the source of the contamination has been established take, if possible, suitable measures to reduce or eliminate this	
		Premixes	0.35 ng WHO-PCB-TEQ/kg <sup>4</sup> + 17			In the event of exceeding the action limit: Determination of the source of the contamination. Once the source of the contamination has been established take, if possible, suitable measures to reduce or eliminate this	
		Compound feed with the exception of feeds for fur-bearing animals and pets and of fishfeed	0.5 ng WHO-PCB-TEQ/kg <sup>4</sup> + 17			In the event of exceeding the action limit: Determination of the source of the contamination. Once the source of the contamination has been established take, if possible, suitable measures to reduce or eliminate this	
C15	DON  (Deoxynivalenol)	Animal feed on full ration basis for:  - Pigs - Cattle - Calves up to 4 months - Dairy cattle - Poultry	0.8 mg/kg  4 mg/kg 1.6 mg/kg 2.4 mg/kg 3.2 mg/kg	1 mg/kg 5 mg/kg 2 mg/kg 3 mg/kg 4 mg/kg	GMP		OZM Part 2; OSP-19

	Contaminant	Product	Action limit <sup>(1)</sup>	Rejection limit <sup>(1)</sup>	Source	Supplementary requirements	Analysis method <sup>2</sup>
<b>Chemical</b>							
		Feed material (supplied to the cattle farmer for immediate feeding) for <ul style="list-style-type: none"> <li>- Pigs</li> <li>- Cattle</li> <li>- Calves up to 4 months</li> <li>- Dairy cattle</li> <li>- Poultry</li> </ul>	1 mg/kg 5 mg/kg 2 mg/kg 3 mg/kg 4 mg/kg	5 mg/kg 15 mg/kg 6 mg/kg 9 mg/kg 12 mg/kg	GMP	The supplier provides information to the cattle farmer in the event of infringement of the action limit for the level of the undesirable substance and provides advice on processing the product in the days ration	
C16	Endosulfan (sum of alfa and beta-isomers and of endosulfan sulphate, expressed in endosulfan)	all animal feeds, with the exception of: <ul style="list-style-type: none"> <li>- maize and derived products</li> <li>- oil-bearing seeds and derived products with the exception of crude vegetable oil</li> <li>- crude vegetable oil</li> <li>- complete fish food</li> </ul>	- - - -	0.1 mg/kg 0.2 mg/kg 0.5 mg/kg 1,0 mg/kg 0.005 mg/kg	Directive 2003/100/EEG amending Directive 2002/32/EEG Directive 2006/77/EEG amending Directive 2002/32/EEG		OZM Part 2; OSP-11
C17	Endrin (sum of endrin and delataketo-endrin, expressed in endrin)	All animal feeds, with the exception of: <ul style="list-style-type: none"> <li>- fats and oils</li> </ul>	- -	0.01 mg/kg 0.05 mg/kg	Directive 2002/32/EG Directive 2006/77/EEG amending Directive 2002/32/EEG		OZM Part 2; OSP-11
C19	Fluorine <sup>3</sup>	Feed materials, with the exception of: <ul style="list-style-type: none"> <li>- animal feeds of animal origin with the exception of sea water shellfish such as krill</li> <li>- seawater shellfish such as krill</li> <li>- phosphates</li> </ul>	- - - -	150 mg/kg 500 mg/kg 3,000 mg/kg 2,000 mg/kg	Directive 2005/87/EEG amending Directive 2002/32/EEG		OZM Part 2; OSP-6
		<ul style="list-style-type: none"> <li>- calcium carbonate</li> <li>- magnesium oxide</li> </ul>	- -	350 mg/kg 600 mg/kg			

	Contaminant	Product	Action limit <sup>(1)</sup>	Rejection limit <sup>(1)</sup>	Source	Supplementary requirements	Analysis method'
<b>Chemical</b>							
		- calcareous marine algae	-	1,000 mg/kg			
		Vermiculite (E 561)	-	3,000 mg/kg <sup>8</sup>	Directive 2008/76/EEG amending Annex I to Directive 2002/32/EEG		
		Supplementary animal feeds					
		- containing $\geq$ 4% phosphorus	-	500 mg/kg			
		- containing > 4% phosphorus	-	125 mg/kg per 1% phosphorus			
		complete animal feeds, with the exception of:		150 mg/kg			
		- complete animal feeds for cattle, sheep and goats					
		- which suck	-	30 mg/kg			
		- others	-	50 mg/kg			
		- complete animal feeds for pigs	-	100 mg/kg			
		- complete animal feeds for poultry	-	350 mg/kg			
		- complete animal feeds for chicks	-	250 mg/kg			
		- complete animal feeds for fish	-	350 mg/kg	Directive 2008/76/EEG amending Annex I to Directive 2002/32/EEG		
C20	Heptachlor (sum of heptachlor and heptachlor epoxyd, expressed in heptachlor)	All animal feeds, with the exception of:	-	0.01 mg/kg	Directive 2002/32/EG		OZM Part 2; OSP-11
		- fats and oils	-	0.2 mg/kg	Directive 2006/77/EEG amending Directive 2002/32/EEG		
C21	Hexachlorobenzene (HCB)	All animal feeds, with the exception of:	-	0.01 mg/kg	Directive 2002/32/EG		OZM Part 2; OSP-11
		- fats and oils	-	0.2 mg/kg	Directive 2006/77/EEG amending Directive 2002/32/EEG		

	Contaminant	Product	Action limit <sup>(1)</sup>	Rejection limit <sup>(1)</sup>	Source	Supplementary requirements	Analysis method <sup>2</sup>
<b>Chemical</b>							
C22	Hexachlorocyclohexane (HCH):		-		Directive 2002/32/EG		OZM Part 2; OSP-11
	- Alfa-isomer	All animal feeds, with the exception of: - fats and oils	-	0.02 mg/kg 0.2 mg/kg	Directive 2006/77/EEG amending Directive 2002/32/EEG		
	- Beta-isomer	Compound feeds with the exception of: - feeds for dairy cattle Feed materials, with the exception of: - fats and oils	-	0.01 mg/kg 0.005 mg/kg 0.01 mg/kg 0.1 mg/kg			
	- Gamma-isomer (lindane)	All animal feeds, with the exception of: - fats and oils	-	0.2 mg/kg 2.0 mg/kg	Directive 2006/77/EEG amending Directive 2002/32/EEG		
C23	Potassium	- Feed materials for delivery to cattle farms, and - Wet mixes for delivery to cattle farmers	60 g/kg (dry matter)	10x the action limit (dry matter) <sup>21</sup>	GMP	If the action limit is exceeded then a warning or processing advice must be demonstrably communicated to the customer.	OZM deel 3; WM-08
C24	Hydrocarbons (C10-C40)	Animal fat, with the exception of: - crude fish oil	-	400 mg/kg (on product basic) 3,000 mg/kg (on product basic)	GMP		OZM Part 2; OSP-15a
		Vegetable oil (with the exception of sunflower oil)  Sunflower oil and sunflower fatty acids	-	400 mg/kg (on product basic)  1,000 mg/kg (on product basic)			

	Contaminant	Product	Action limit <sup>(1)</sup>	Rejection limit <sup>(1)</sup>	Source	Supplementary requirements	Analysis method <sup>2</sup>
<b>Chemical</b>							
		Vegetable fatty acids incl. Mixes of fatty acids (with the exception of sunflower fatty acids)	-	3,000 mg/kg (on product basic)			
		Palm oil	-	25 mg/kg calculated as diesel oil		This norm applies if the hydrocarbons (calculated as diesel oil) are determined via the GC-MS method. If use is made of the GC-FID method, then the norm for vegetable oil applies	OZM Part 2; OSP-15b
	Hydrocarbons (mineral oil) (C10-C56/C20-C56 minus C27 + C29 +C31)	Sunflower oil originating in or consigned from Ukraine		50 mg/kg (on product basic)	Commission Decision 2008/388/EC of 23 May 2008	<i>Temporary standard. In one year the situation will be re-assessed. The batch must be accompanied by a report of analysis</i>	The method of detection GC-FID (flame ionisation detector) is preferable, but the GC-MS can be used as well.
C25	Copper (E4)	Free-range consumption pig feed	-	25 mg/kg total	GMP	Only for free-range consumption pig feed	OZM Part 1; TVM-I-2
		Pigs: <sup>13</sup>	-		Commission Regulation (EC) No 1334/2003 amending the conditions for authorisation of a number of additives in feedingstuffs belonging to the group of trace elements		
		- Piglets to 12 weeks <sup>13</sup>	-	170 mg/kg total			
		- Other pigs <sup>13</sup>	-	25 mg/kg total			
		Cattle: <sup>13</sup>					
		1. Cattle before they start with rumination:					
		- Milk replacer <sup>13</sup>	-	15 mg/kg total			
		- Other complete animal feeds <sup>13</sup>	-	15 mg/kg total			
		2. Other pigs <sup>13</sup>	-	35 mg/kg total			
		- Sheep <sup>13</sup>	-	15 mg/kg Total			

	Contaminant	Product	Action limit <sup>(1)</sup>	Rejection limit <sup>(1)</sup>	Source	Supplementary requirements	Analysis method <sup>7</sup>
<b>Chemical</b>							
		- Fish <sup>13</sup>	-	25 mg/kg total			
		- Shellfish <sup>13</sup>	-	50 mg/kg total			
		- Other animals <sup>13</sup>	-	25 mg/kg total			
C26	Mercury	Feed materials, with the exception of:	-	0.1 mg/kg	Directive 2005/8/EEG amending Directive 2002/32/EEG		OZM Part 2; OSP-5
		- animal feeds obtained by processing fish or other sea creatures	-	0.5 mg/kg			
		- calcium carbonate	-	0.3 mg/kg			
		complete animal feeds, with the exception of:	-	0.1 mg/kg			
		- complete animal feeds for dogs and cats	-	0.4 mg/kg			
		complete animal feeds, with the exception of:	-	0.2 mg/kg			
		- supplementary animal feeds for dogs and cats	-	-			
C27	Lead <sup>10</sup>	Feed materials, with the exception of:	-	10 mg/kg	Directive 2005/87/EEG amending Directive 2002/32/EEG		OZM Part 2; OSP-28
		- green fodder <sup>9</sup>	-	30 mg/kg <sup>8</sup>			
		- phosphates and limestone	-	15 mg/kg			
		- calcium carbonate	-	20 mg/kg			
		- yeast	-	5 mg/kg			
		Feed additives, belonging to the functional group "Compounds of trace elements", with the exception of:		100 mg/kg			
		- zinc oxide		400 mg/kg <sup>8</sup>			
		- manganese (II)oxide, ferrous carbonate, copper carbonate		200 mg/kg <sup>8</sup>			
		Feed additives, belonging to the functional group "Binding agents and thinners", with the exception of:		30 mg/kg <sup>8</sup>			
		- clinoptilolite of volcanic origin		60 mg/kg <sup>8</sup>			
		Premixes		200 mg/kg <sup>8</sup>			

	Contaminant	Product	Action limit <sup>(1)</sup>	Rejection limit <sup>(1)</sup>	Source	Supplementary requirements	Analysis method/
<b>Chemical</b>							
		complete animal feeds, with the exception of:	-	10 mg/kg			
		- mineral mixes	-	15 mg/kg			
		Complete animal feeds	-	5 mg/kg			
C28	Ergot of rye ( <i>Claviceps purpurea</i> )	All animal feeds which contain unground grain	-	1,000 mg/kg	Directive 2002/32/EG		OZM Part 2; OSP-32
C29	Sodium	- Feed materials for delivery to cattle farms, and  - Wet mixes for delivery to cattle farmers	8 g/kg (dry matter)	10x the action limit (dry matter) <sup>21</sup>	GMP	If the action limit is exceeded then a warning or processing advice must be demonstrably communicated to the customer.	OZM deel 3; WM-09
C30	Nickel	Feed fats	20 mg / kg (on a fat basis)	50 mg / kg (on a fat basis)	GMP		OZM Part 2; OSP-29
C31	Nitrite	Fish meal	-	60 mg/kg (expressed in sodium nitrite)	Directive 2002/32/EG		OZM Part 2; OSP-7
		complete animal feeds, with the exception of:	-	15 mg/kg (expressed in sodium nitrite)			
		- feeds for pets with the exception of birds and aquarium fish	-	-			
C32	Weed seeds and unground or pulverised fruits which contain alkaloids, glucosides or other poisonous substances separately or jointly, including:	All animal feeds	-	3,000 mg/kg	Directive 2002/32/EG		Microscopic determination in accordance with the instructions of the manufacturer
	- <i>Datura stramonium</i> L.		-	1,000 mg/kg			
C33	Insoluble impurities	Melted fats from ruminants	-	0,15%	Regulation 1774/2002		OZM Part 2; OSP-16
C34	Ochratoxin A	Animal feed on full ration basis for:			GMP		OZM Part 2; OSP-19

	Contaminant	Product	Action limit <sup>(1)</sup>	Rejection limit <sup>(1)</sup>	Source	Supplementary requirements	Analysis method <sup>2</sup>
<b>Chemical</b>							
		- sows and consumption pigs and piglets  - poultry	0.04 mg/kg  0.16 mg/kg	0.05 mg/kg  0.2 mg/kg		The supplier provides information to the cattle farmer in the event of infringement of the action limit for the level of the undesirable substance and provides advice on processing the product in the days ration	
		Feed material (supplied to the cattle farmer for immediate feeding) for  - Sows and pigs and piglets - Poultry	  0.05 mg/kg 0.2 mg/kg	  0.15 mg/kg 0.6 mg/kg			
C35	Polycyclic Aromatic Hydrocarbons (PAHs)	Feed fats	15 µg/kg BaPEQ (on fat basis)	50 µg/kg BaPEQ (on fat basis)	GMP		BaPEQ = Benzo(a)pyrene equivalent
C38	Ricinus-Ricinus communis L.	All animal feeds	-	10 mg/kg (expressed in ricinus husks)	Directive 2002/32/EG		Microscopic determination in accordance with the instructions of the manufacturer
C39	Sulphate	- Feed materials for delivery to cattle farms, and  - Wet mixes for delivery to cattle farmers which are preserved with sulphuric acid and not for products which by nature are rich in sulphur	8 g/kg (dry matter)	10x the action limit (dry matter) <sup>21</sup>	GMP	If the action limit is exceeded then a warning or processing advice must be demonstrably communicated to the customer.	OZM deel 2; OSP-24
C40	Theobromine	complete animal feeds, with the exception of:  - complete animal feeds for full-grown cattle	- -	300 mg/kg 700 mg/kg	Directive 2002/32/EG		OZM Part 2; OSP-8
C41	Vinythiooxazolidon	Complete animal feeds for poultry with the exception of:	-	1,000 mg/kg	Directive 2002/32/EG		OZM Part 2; OSP-31

	Contaminant	Product	Action limit <sup>(1)</sup>	Rejection limit <sup>(1)</sup>	Source	Supplementary requirements	Analysis method <sup>2</sup>
<b>Chemical</b>							
	(Vinyloxazolidine thion)	- complete animal feeds for laying poultry	-	500 mg/kg			
C42	Volatile mustard oil	Feed materials, with the exception of:	-	100 mg/kg	Directive 2002/32/EG		OZM Part 2; OSP-20
		- colza cakes	-	4,000 mg/kg (calculated as allylisothiocyanate)			
		complete animal feeds, with the exception of:	-	150 mg/kg (calculated as allylisothiocyanate)			
		- Complete animal feeds for cattle, sheep and goats (with the exception of young animals)	-	1,000 mg/kg (calculated as allylisothiocyanate)			
		- Complete animal feeds for pigs (with the exception of piglets) and poultry	-	500 mg/kg (calculated as allylisothiocyanate)			
C43	Free gossypol	Feed materials, with the exception of:	-	20 mg/kg	Directive 2003/100/EEG amending Directive 2002/32/EEG		OZM Part 2; OSP-21
		- cotton seed	-	5,000 mg/kg			
		- cotton seed cake and cotton seed meal	-	1,200 mg/kg			
		complete animal feeds, with the exception of:	-	20 mg/kg			
		- complete animal feeds for cattle, sheep and goats	-	500 mg/kg			
		- complete animal feeds for poultry (except laying hens) and calves	-	100 mg/kg			
		- complete animal feeds for rabbits and pigs (except piglets)	-	60 mg/kg			
C44	Zearalenon	Animal feed on full ration basis for:			GMP		OZM Part 2; OSP-19
		- sows and consumption pigs	0.2 mg/kg	0.25 mg/kg			
		- young pigs	0.08 mg/kg	0.1 mg/kg			
		- young cattle and dairy cattle	0.4 mg/kg	0.5 mg/kg			

	Contaminant	Product	Action limit <sup>(1)</sup>	Rejection limit <sup>(1)</sup>	Source	Supplementary requirements	Analysis method <sup>2</sup>
<b>Chemical</b>							
		Feed material (supplied to the cattle farmer for immediate feeding) for  - sows and pigs - young pigs - young cattle and dairy cattle	0.25 mg/kg 0.1 mg/kg 0.2 mg/kg	0.75mg/kg 0.3 mg/kg 1.5 mg/kg		The supplier provides information to the cattle farmer in the event of infringement of the action limit for the level of the undesirable substance and provides advice on processing the product in the days ration	
C45	Zinc (E6)	Free-range consumption pig feed	-	90 mg/kg total	GMP	Only for free-range consumption pig feed	OZM Part 1; TVM-I-4
		Pets <sup>13</sup>	-	250 mg/kg total	Commission Regulation (EC) No 1334/2003 amending the conditions for authorisation of a number of additives in feedingstuffs belonging to the group of trace elements		
		Fish <sup>13</sup>	-	200 mg/kg total			
		Milk replacer <sup>13</sup>	-	200 mg/kg total			
		Other animals <sup>13</sup>	-	150 mg/kg total			
C46	Melamine	- All feeds which contain milk and milk products, soya or soya products originating from or sent from China.	-	2,5 mg/kg	Commission Decision 2008/921/EC of 9 December 2008 amending Commission Decision 2008/798/EG of 14 October 2008.	<i>All batches from China or feeds sent from China which contain milk and milk products, soya or soya products must be tested for Melamine. See Commission Decision 2008/798/EC for complete information.</i>	
		- Ammonium bicarbonate intended for use in feeds	-	2,5 mg/kg		<i>- All batches from China or ammonium bicarbonate from China intended for use in feeds must be tested for Melamine.</i>	
		- All other feeds originating in China which have a high protein content.	-	2,5 mg/kg		<i>Random checks may be carried out on other feeds which have originated in China and which have a high protein content before the products are imported into the EU.</i>	

	Contaminant	Product	Action limit <sup>(1)</sup>	Rejection limit <sup>(1)</sup>	Source	Supplementary requirements	Analysis method <sup>2</sup>
<b>Physical</b>							
F1	Plastics	- Feed materials for delivery to cattle farms, and  - Wet mixes for delivery to cattle farmers	-	1.5 g/kg (dry matter basis)	GMP	Via manual separation and weighing  This norm was included subject to the outcome of the discussion taking place in the European Commission.	Microscopic determination in accordance with the instructions of the manufacturer
F2	Polyethylene	- Feed materials for delivery to cattle farms, and  - Wet mix for delivery to cattle farmers	0.25 g/kg (on fat basis)	0.5 g/kg (on fat basis)	GMP		OZM Part 2; OSP-13
F5	Beech, unpeeled seeds - <i>Fagus silvatica</i> (L.)	All animal feeds	-	Seeds and fruits of the adjacent plant types and the by-products obtained from processing may not appear in animal feeds unless as traces which can not be quantitatively determined	Directive 2002/32/EG		
F6	Chinese mustard – <i>Brassica juncea</i> (L.) Czern. and Coss. ssp. <i>juncea</i> var. <i>lutea</i> Batalin						
F7	Ethiopian mustard – <i>Brassica carinata</i> A. Braun						
F8	Indian brown mustard - <i>Brassica juncea</i> (L.) Czern. and Coss. ssp. <i>integrifolia</i> (West.) Thell.						
F9	Mowrah, <i>Bassia</i> , <i>Madhuca</i> – <i>Madhuca longifolia</i> (L.) Macbr. (= <i>Bassia longifolia</i> L. = <i>Illipe malabrorum</i> Engl.) <i>Madhuca indica</i> Gmelin (= <i>Bassia latifolia</i> (Roxb.) = <i>Illipe latifolia</i> (Roscb.) F. Mueller)						

	Contaminant	Product	Action limit <sup>(1)</sup>	Rejection limit <sup>(1)</sup>	Source	Supplementary requirements	Analysis method <sup>7</sup>
<b>Physical</b>							
F10	Physic nut - <i>Jatropha curcas</i> L.		-				
F11	Physic croton - <i>Croton tiglium</i> L.		-				
F12	Sarepta mustard - <i>Brassica juncea</i> (L.) Czern. and Coss. ssp. <i>juncea</i>		-				
F14	Black mustard – <i>Brassica nigra</i> (L.) Koch		-				

[ 1 ] Action limit: A feasible limit agreed in consultation with the sector, supplier or customer. If this limit is exceeded then an investigation into the cause should be undertaken and corrective measures should be taken to remove or control that cause. Maximum levels in mg/kg (ppm) of the feed materials or compound feeds, derived to a moisture content of 12% unless mentioned differently.

Rejection limit: A feasible limit agreed in consultation with the sector, supplier or customer. If this limit is exceeded then the product is not suitable for use as feed material or animal feed. Maximum levels in mg/kg (ppm) of the feed materials or compound feeds, derived to a moisture content of 12% unless mentioned differently.

[2] The maximum levels refer to an analytical determination of cadmium where the extraction is done for 30 minutes a boiling temperature in Nitric acid (5% m/m). Equivalent extraction procedures may be used where it can be demonstrated that the extraction procedure used has the same extraction efficiency

[3] The maximum levels refer to an analytical determination of fluorine where the extraction is done for 20 minutes at an ambient temperature with hydrochloric acid 1 N. Equivalent extraction procedures may be used where it can be demonstrated that the extraction procedure used has the same extraction efficiency

[4] Upper limit concentrations; in the calculation of upper limit concentrations it must be assumed that values lying under the detection limits for the various congeners are equal to the detection limit.

[5] The individual maximum level for dioxins (PCDD/Fs) remains temporarily applicable. The values specified in item C13a for products intended for feeding to animals must correspond in this period to the maximum levels for dioxins and the maximum levels for the sum of dioxins and dioxin-like PCBs.

[6] Fresh fish which is supplied directly without any further processing and used for the production of feeds for fur-bearing animals gebruikt, is exempted from the maximum level, and for fresh fish which is used for the direct feeding of pets, zoo animals and circus animals there is a maximum level of 4.0 ng WHO-PCDD/F-TEQ/kg product and 8.0 ng WHO-PCDD/F-TEQ/kg product. The products, processed animal proteins from these animals (fur-bearing animals, pets, zoo animals and circus animals), may not get into the feed chain and the feeding of them to productive livestock which are kept for the production foodstuffs, are being fattened up or bred, is forbidden.

[7] The research methods (OZM) can be found via the PDV website ([www.pdv.nl](http://www.pdv.nl) ; quality; research methods)

[8] The levels will be reviewed before 31 December 2007 with a view to lowering the maximum levels

[9] Green fodder includes products which are intended for feeding to animals such as hay, silage, fresh grass, etc.

[10] The maximum levels refer to an analytical determination of lead where the extraction is done for 30 minutes a boiling temperature in Nitric acid (5% m/m). Equivalent extraction procedures may be used where it can be demonstrated that the extraction procedure used has the same extraction efficiency

[11] (sum of the polychlorinated dibenzo-para dioxins (PCDDs) and the polychlorinated dibenzofurans (PCDFs) expressed in toxicity equivalents established by the World Health Organisation (WHO) where use is made of the WHO-TEFs (toxicity equivalence factors from 1997)

[12] (sum of the polychlorinated dibenzo-para dioxins (PCDDs) and the polychlorinated dibenzofurans (PCDFs) and the polychlorinated biphenyls (PCBs) expressed in toxicity equivalents established by the World Health Organisation (WHO) where use is made of the WHO-TEFs (toxicity equivalence factors from 1997)

[13] If the GMP norm for this product and the animal type in question is lower than the norm specified here, then the GMP norm applies. In complete animal feed

[14] n = number of samples to be tested; m = threshold value for the number of bacteria; the results will be considered to be satisfactory if the number of bacteria in none of the samples is greater than m, M = maximum value for the number of bacteria in one or more samples is equal to or greater than M, c = number of samples for which the bacteria count gives a result between m and M and where the sample is still considered acceptable if the result of the bacteria for the other samples is not higher than m.

[15] At the request of the competent authorities the responsible operator must carry out an analysis to show that the level of anorganic arsenic is lower than 2 ppm. This analysis is especially important for the *Hizikia fusiforme* seaweed

[16] The maximum levels refer to the total level of arsenic

[17] The Commission will evaluate these action limits at the same time as the maximum levels for the sum of dioxins and dioxin-like PCBs before 31 December 2008.

[18] TEF's from the WHO for the assessment of the risks to humans based on the conclusions of the meeting of the World Health Organisation in Stockholm, Sweden, 15-18 June 1997 (van den Berg et al., (1998) Toxic Equivalence Factors (TEF's) for PCB's, PCDD's, PCFD's for Humans and for Wildlife Environmental Health Perspectives, 106(12), 775).

Congenor	TEF Value	Congenor	TEF Value
<b>Dibenzo-p-dioxins (PCDDs)</b>		<i>Dioxin-like PCBs</i>	
2,3,7,8-TCDD	1	<b>Non-ortho-PCBs + mono-ortho-PCBs</b>	
1,2,3,7,8-PeCDD	1	<b>Non-ortho-PCB'</b>	
1,2,3,4,7,8-HxCDD	0.1	PCB 77	0,0001
1,2,3,4,7,8-HxCDD	0.1	PCB 81	0,0001
1,2,3,4,7,8-HxCDD	0.1	PCB 126	0,1
1,2,3,4,6,7,8-HpCDD	0.01	PCB 169	0,01
OCDD	0.0001		
		<b>Mono-ortho-PCBs</b>	
<b>Dibenzofuranes (PCDFs)</b>		PCB 105	0,0001
2,3,7,8-TCDF	0.1	PCB 114	0,0005
1,2,3,7,8-PeCDF	0.05	PCB 118	0,0001
2,3,4,7,8-PeCDF	0.5	PCB 123	0,0001
1,2,3,4,7,8-HxCDF	0.1	PCB 156	0,0005
1,2,3,6,7,8-HxCDF	0.1	PCB 157	0,0005
1,2,3,7,8,9-HxCDF	0.1	PCB 167	0,00001
2,3,4,7,8-HxCDF	0.1	PCB 189	0,0001
1,2,3,4,6,7,8-HpCDF	0.01		
1,2,3,4,7,8,9-HpCDF	0.01		
OCDF	0.0001		

Key to abbreviations: T= tetra; Pe= penta; Hx=hexa; Hp= hepta; O= octa; CDD= chlordibenzodioxin; CDF= chlordibenzofuran; CB= chlorbiphenyl

[19] (sum of the polychlorinated biphenyls (PCBs) expressed in toxicity equivalents established by the World Health Organisation (WHO) where use is made of the WHO-TEFs (toxicity equivalence factors from 1997)

[20] Explanation of 0<sup>+</sup>: this norm does not apply to each individual sample. In a particular period of time the Salmonella incidence at company level should approach 0% (= 0<sup>+</sup>).

[21]The rejection limits do not apply to feeds such as salt or mineral licks which are deliberately supplied with high mineral levels.

## 4. RESIDUE LEVELS OF PESTICIDES IN FEEDS

### 4.1 Introduction

A start was made in April 2005 in the EU on the revision of the community legislation with respect to the permitted maximum levels of residues of pesticides by way of [Regulation \(EG\) No. 396/2005](#). This regulation includes the maximum residue levels (MRL) for simple products of vegetable and animal origin intended for human consumption and for feeds. In as much as the MRLs apply to feeds they are applicable to both feeds for food-producing animals and for non-food-producing animals.

The layout of the norm is such that in many cases it is not possible immediately to indicate a norm for a certain combination of feed / pesticide. This chapter indicates:

- How the correct norm for a simple, untreated/unprocessed product can be out-of-date;
- How the correct norm for a derived product can be determined;
- How the correct norm for a compound feed can be determined;
- Which special requirements apply.

### 4.2 The establishment of an MRL

#### 4.2.1 General

The MRLs (maximum residue levels) are established for simple products. Many of these MRLs are to be found on "Pesticides Web", a database which was created by the EC. ([http://ec.europa.eu/sanco\\_pesticides/public/index.cfm?event=substance\\_selection&ch=1](http://ec.europa.eu/sanco_pesticides/public/index.cfm?event=substance_selection&ch=1)) This is almost always the untreated form of a product. This means that a number of calculations must be carried out both for the determination of the MRL in a derived product (for example, sunflower oil, maize gluten meal) and for the determination in compound products (compound feeds, supplementary feeds).

The correct norm can be determined using the enclosed questionnaires. The basic principle of the questionnaires is that there is a known pesticide and that the associated residue norm must be found for a particular feed.

The questionnaires have been drawn up so that you always are led to a result. The following questionnaires are available.

- *Questionnaire for basic products.*  
This questionnaire helps you determine the MRL for basic products.
- *Questionnaire for by-products.*  
This questionnaire helps you determine the MRL for auxiliary products.
- *Questionnaire for compound feeds.*  
This questionnaire helps you determine the MRL for compound feeds.

It is of great importance to note here that Regulation (EC) No. 396/2005 only applies to products of vegetable or animal origin! If this is not the case then any norms in [Directive 2002/32/EG](#) still apply.

To make this chapter easier to read the questionnaire makes use of the definitions in the following table.

Table 1: Definitions and questionnaires

Product group	Definition	Questionnaire
Basic product	Simple, unprocessed product of vegetable or animal origin (wheat, barley, linseed, sunflower seeds, soya bean, peas, shrimps)	4.2.2.
Auxiliary products	Simple, treated/processed or derived product, originating from an basic product. (flour, semolina pellets, potato press fibres, soya flakes, linseed oil, peapod meal, fish meal)	4.2.3
Compound feed	Compound product consisting of at least two components being basic products, by-products and/or feed additives. (complete feed, supplementary feed, petfood, grain mixes, premixes)	4.2.4.

NOTE: These definitions have only been drawn up to improve the readability of Chapter 4 and have no value or legitimacy outside this chapter.

The questionnaires help you to determine the norm. You are not always immediately led to a number or value. It could be that you are referred to another point in a table or to another table. It may also be possible that you have to carry out a few calculations.

For a limited number of products (table 2) the MRL in Regulation (EC) No. 396/2005 may not (yet) apply # for parts of these products are given the exclusive destination animal feed. For these products the MRLs for pesticides therefore still apply as specified in the Directive 2002/32/EG.

Table 2: Product (groups) of which parts with the exclusive destination animal feed do not (yet) fall under Reg. 396/2005

Product (groups)			
Fish, fish products, crustaceans and shellfish and other products from salt and fresh water creatures*	Kohl-rabi foliage	Palm hearts	Palm kernels
Only for crops used for feed*	Garden cress	Fungi	Palm fruits
Loquats	Winter cress	Seaweed	Kapok
Cherimoya's	Rucola	Lupines (dried)	Millet
Guavas	Red amsoi	Shells, seeds and possibly skins of oil-retaining seeds and fruits (such as soya hulls)	Sorghum
Bread fruits	Leaves and sprouts of <i>Brassica spp.</i>	Borage	Coffee beans
Durians	Purslain	Pumpkin seed	Herbal tea
Soursops (durian blanda)	Vine leaves	Hemp seed	Cacao bean
Arrowroot	Herbs (sage, rosemary, thym, basi, laurel, tarragon)	Camelina	Carob
Nut shells	Lentils (fresh)	Safflower seed	Spices
Sprouts stems	Bamboo shoots	Olives (oil recovery)	Sugar crops

\* : The norms of Reg. 396/2005 apply neither to feeds nor to foodstuffs for (parts of) products in these groups.

For all other products of vegetable or animal origin, Regulation (EC) No. 396/2005 applies.

#### 4.2.2 Questionnaire for basic products.

1. Is your basic product in Table 2 and does it have the exclusive destination animal feed?  
**Yes** This new regulation does not yet apply to your basic product.  
Check if **Directive 2002/32/EG** contains a norm for your basic product / pesticide combination (**end**).  
**No** Go to question 2.
2. Is your basic product included in [Appendix I](#) of Reg. 396/2005, either as an individual product (column 3, 4 and 5) or as a group of products (column 2)?  
**Yes** Go to question 3.  
**No** Your basic product is probably not a simple untreated / Unprocessed product of vegetable or animal origin.  
Check your product using the definitions in Table 1. Consult your supplier.
3. Is your basic product individually included in [Appendix I](#) of Reg. 396/2005, (column 3, 4 and 5)  
**Yes** Go to question 4.  
**No** Go to question 7.
4. Is the pesticide for which you are looking for a norm included in [Pesticides Web](#) , the online EU pesticides database?  
**Yes** Go to question 5.  
**No** Go to question 6.
5. On [Pesticides Web](#) select the language you want, your basic product and the pesticide for which you want the MRL. Click on the button "Search current MRL". You have found the norm. Place the mouse cursor on the MRL or click on the pesticide for additional information (**end**).
6. Is the pesticide included in Appendix V of Reg. 396/2005?  
**Yes** You have found the norm for the pesticide. Carefully read any footnotes which apply to the norm (**end**).  
**No** The pesticide is not specified. The norm amounts to 0.01 mg/kg for basic products. (**end**)

*Note: At the time of the first publication of this document Appendix V was not yet completed*

7. Is the pesticide for which you are looking for a norm included in [Pesticides Web](#) , the online EU pesticides database?  
**Yes** Go to question 8.  
**No** Go to question 9.
8. On [Pesticides Web](#) select the language you want, the (sub) group of products to which your basic product belongs and the pesticide for which you want the MRL. Click on the button "Search current MRL". You have found the norm. Place the mouse cursor on the MRL or click on the pesticide for additional information (**end**).
9. Is the pesticide included in Appendix V of Reg. 396/2005?  
**Yes** You have found the norm for the pesticide. Carefully read any footnotes which apply to the norm (**end**).  
**No** The pesticide is not specified. The norm amounts to 0.01 mg/kg for basic products. (**end**)

*Note: At the time of the first publication of this document Appendix V was not yet completed*

#### 4.2.3 Questionnaire for by-products.

1. Is your by-product from a product / product group in table 2 and does it have the exclusive destination animal feed?  
**Yes** This new regulation does not yet apply to your basic product.  
Check if [Directive 2002/32/EG](#) contains a norm for your basic product / pesticide combination **(end)**.  
**No** Go to question 2.
2. Is your by-product included in [Appendix I](#) of Reg. 396/2005, either as a by-product (column 2 in combination with 3, 4 or 5) or as a group of products (column 2) or in the form of the original product?  
**Yes** Go to question 3.  
**No** Your by-product is probably not a product of vegetable or animal origin. Check your product using the definitions in Table 1. Consult your supplier.
3. Is your by-product from that part of the (derived) product or the product group for which the MRL applies (Reg. 396/2005, [Appendix I](#), column 6)?  
**Yes** The norms in this regulation apply to your by-product. Go to question 4.  
**No** This new regulation does not yet apply to your by-product. Check if [Directive 2002/32/EG](#) contains a norm for your by-product/pesticide combination **(end)**.

You have established that the norms from this regulation apply to your by-product. You then use the questionnaire for basic products (4.2.2.) question 3 and further, to determine the norm for your individually-specified by-product, the original product or the relevant product group. Now proceed with question 4 in this questionnaire.

4. Is the by-product for which the norm is established equal to the by-product for which you are looking for a norm?  
**Yes** The norm you have found is the norm for this by-product / pesticide combination. **(end)**  
**No** Go to question 5.
5. In Reg. 396/2005, Appendix VI, is there a concentration or dilution factor established for your by-product or for the treatment / processing which is the basis for your by-product?  
**Yes** Use this factor to determine the final norm for this by-product / pesticide combination. **(end)**  
**No** Go to question 6.

*Note: At the time of the first publication of this document Appendix VI was not yet completed*

6. Is the treatment / processing for this by-product based on the separation of a fat and water fraction?  
**Yes** Go to question 7.  
**No** The processing / treatment has no effect on the residue level, the norm which you have found is the final norm for this by-product/pesticide combination. **(end)**

Your by-product has been created as a result of the separation of a fat-oil fraction and a fat-oil free fraction (pressing, extraction). In the rest of this questionnaire you determine if there is an accumulation of residues in the fat fraction or in the fat-free fraction

7. Does the name of the pesticide in [Pesticiden Web](#) have the suffix (F)?  
**Yes** The pesticide is soluble in fat. Determine, using the fat percentage in the original product and in your by-product, the dilution or concentration factor (see table 3) and divide or multiply this by the norm found for the original product(group) in order to determine the final norm.(end)

Table 3: Concentration factors for many vegetable oils which are used

Oil-retaining basic product	Avg. oil level	Concentration factor in oil
Palm fruit	50	2
Sheanut	50	2
Coconut	50	2
Palm kernel	49	2
Sesame seed	49	2
Peanut	48	2
Rapeseed	40	2
Linseed	45	2
Sunflower seeds	32	3
Kardi / Safflower seed	31	3
Cotton seed	20	5
Soya bean	19	5
Grape seed	15	6

Source: Product Board for Margarine, Fats and Oils (MVO), Memorandum Crude Oils MRLs, Sept. 2003

**No** Go to question 8.

8. Search on [International Chemical Safety Cards \(ICSCs\)](#) for the pesticide in question and note the "Octanol/water partition coefficient" (log Pow) which you will find in the chapter "Physical properties". The log Pow is a measure of the solubility in water or fat of the pesticide. Is the log Pow greater than 4?

**Yes** The pesticide is soluble in fat. Determine, using the fat percentage in the original product and in your by-product, the dilution or concentration factor and divide or multiply this by the norm found for the original product(group) in order to determine the final norm.(end)

**No** Go to question 9.

9. Is the log Pow between 3 and 4?

**Yes** The pesticide is not specifically soluble in water or fat. There is no Dilution or concentration of the pesticide residue as a Result of the treatment to which the original product was subjected. The norm which you found in the [Pesticides Web](#) also applies to your by-product. (end)

**No** Go to question 10.

10. The log Pow is less than 3. The pesticide is soluble in water. Use the fat percentage in the original product and your by-product to determine the dilution or concentration factor and divide or multiply this by the the norm you found for the original product or product group in order to determine the final norm.(end). *Note: In this case, where there is a pesticide which is soluble in water, there is dilution of the fat fraction and concentration of the fat-free fraction!*

*Note: the method described in this section for the determination of maximum residue limits (MRL) in fats and oils also applies to fatty acids.*

#### 4.2.4 Questionnaire for compound feeds.

1. Specify the individual components of your compound feed. In Reg. 396/2005, Appendix VI, has a concentration or dilution factor has been established for
  - your compound feed,
  - A certain fraction of your compound feed
  - A by-product that is part of your compound feed?

**Yes** Use this factor or factors to determine the final norm for this specific part of your compound feed and to determine the pesticide in question. Go to question 2.

**No** Go to question 2.

*Note: At the time of the first publication of this document Appendix VI was not yet completed*

2. Does your compound feed contain basic products among other things?

**Yes** For each of these components go through the questionnaire in par. 4.2.2. In order to determine the norms for these components. Go to question 3

**No** Go to question 3.
3. Your compound feed contains (among other things) by-products. For each of these components go through the questionnaire in par. 4.2.3. In order to determine the norms for these components. Go to question 4.
4. Have you determined a norm for all the components for which a norm has been set and have you taken account of the factors laid down in question 1?

**Yes** Go to question 5.

**No** Go through this questionnaire again starting at question 1
5. Now determine the MRL for the specific pesticide in the compound feed in the following way

$$MRL_x = \{(N_x C_1 * C_1) + (N_x C_2 * C_2) \dots + (N_x C_n * C_n)\} / \Sigma C_1:C_n$$

Where:  $MRL_x$  : Is the maximum residue norm for pesticide X in the compound feed

$N_x C_n$  : The norm found for the component / group of components C (1 to n)

$C_n$  : The percentage in the compound feed for component / group Of components C (1 to n)

$\Sigma C_1:C_n$ : The sum of the percentages of components for which an MRL for pesticide X actually applies

#### 4.2.5 Fumigators

It is permitted to trade feeds which at the moment of sale exceed an MRL for a pesticide specified in Appendix II or III of Reg. 396/2005. This relates to an excess as a result of treatment of feeds with gaseous pesticides (gas generation, fumigation) after harvesting. The pesticides for which this permission applies and also the products involved are specified in [Appendix VII](#) of Reg. 396/2005.

### **4.3 Special requirements**

In addition to the norms for undesirable substances which have a broad validity within the feed chain, some specific measures are announced with some regularity for precisely-defined products or product groups. These are often temporary measures as a result of very specific contamination. The following measures are currently in force.

- [Decision 2008/352/EG](#) of 29/04/08 adopting special requirements for guar flour originating or sent from India due to the risks of contamination of this product with pentachlorophenol and dioxins.

# PART B: RESIDUE NORMS

## 1. INTRODUCTION

In addition to compliance with the adopted norms in appendix 1, part A, the participant must also comply with the (residue) levels of additives and veterinary medical products. Please refer to the definition of feed safety as laid down in the list of definitions for the GMP<sup>+</sup> Certification Scheme.

The participant must ensure that

- a. the correct additives and veterinary medical products get into the right feed in the right dosage (GMP<sup>+</sup> B1, section 6.7.1.2).
- b. (residues of) additives and veterinary medical products are not present or are under set maximum limits (the so-called residue norms) in feeds in which they should not be present (GMP<sup>+</sup> B1, section 6.7.1.5).

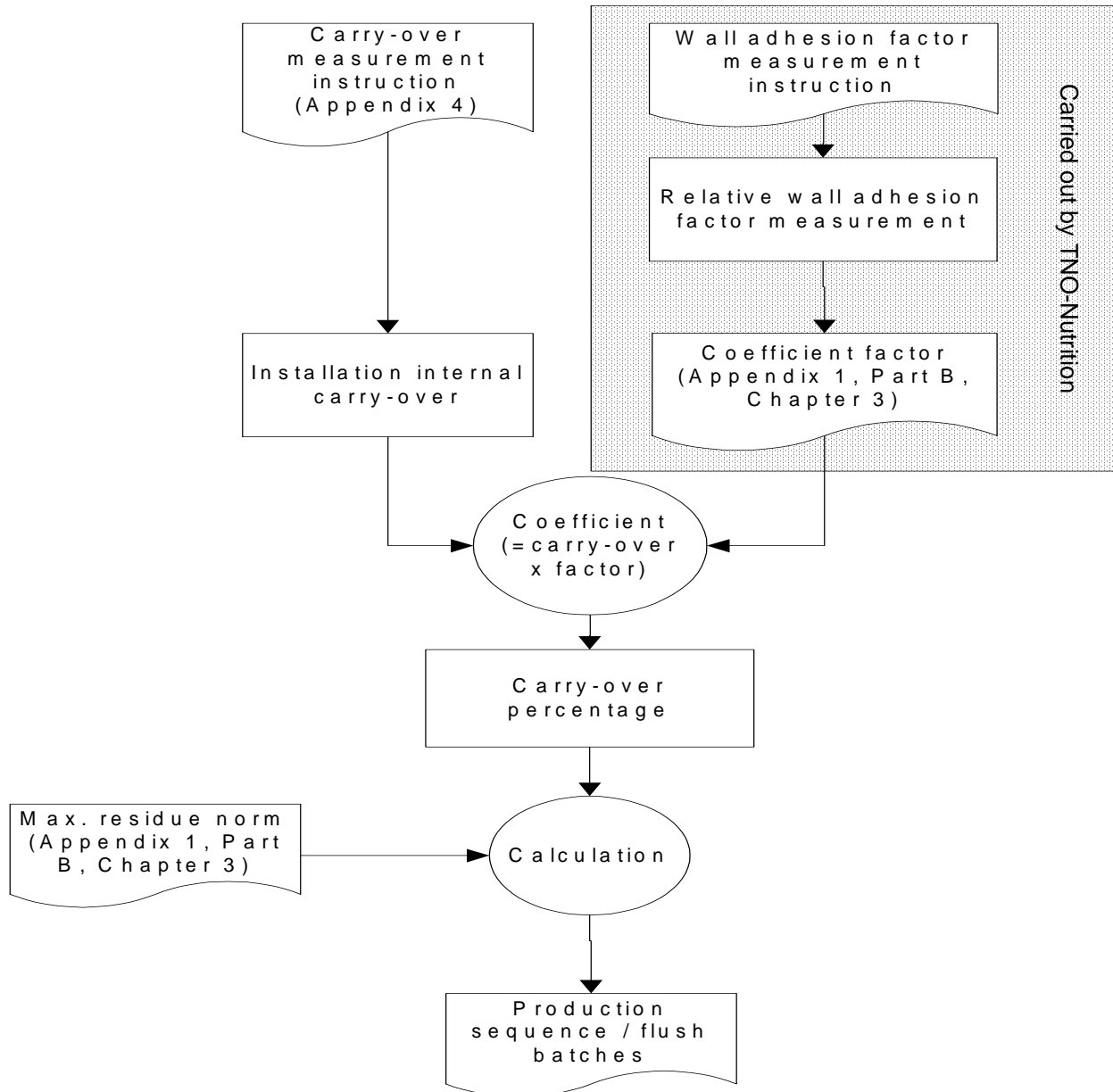
In order to be able to control the residue levels the participant should, among other things, measure carry-over in the installations (see Appendix 4) and establish production sequences. In chapter 2 of part B of this appendix there are further instructions for this.

Chapter 3 of part B of this appendix states the maximum residue norms for coccidiostats, histomonostats and critical veterinary medical products. These norms apply to compound feeds, semi-manufactured products, feed materials and premixtures and are applicable to producers of these products.

## 2. ADDITIONAL PROVISIONS

### 2.1 General

The control of residue levels using the production sequence is shown in diagram form in the following table.



## 2.2 Compound feed

### 2.2.1 Installation carry-over level:

The installation's own carry-over is the carry-over measured using an inspection procedure as laid down in Appendix 4.

The frequency at which the carry-over must be measured is determined as follows:

- a. If the participant processes or transports (animal feed products containing) feed additives for which a residue norm has been determined in the table in Chapter 3 or veterinary medical products then the degree of carry-over must be known for the lines on which these products are processed.
- b. If the participant has relevant <sup>1</sup> lines then he must measure carry-over at least once per two years.
- c. The minimum frequency for the measurement of carry-over may be lowered to once per year on condition that:
  - o the carry over measured is less than 10% and
  - o as soon as the last measurement is over two years old, the participant must assume the degree of carry over of the line in question is 15%.

The carry-over must be re-established in the event of major changes to the installation.

### 2.2.2 The coefficient

The coefficient is intended to take account of an extra carry-over in addition to the installation carry-over, as a consequence of the processing properties of the additive or veterinary medicine. A factor of 1 means that the product contains no processing properties other than those of a standard measurement substance. The actual carry-over of the product therefore corresponds to the installation carry-over. If the factor is greater than 1, this means that the product has anomalous processing properties, such that the actual carry-over will be higher than the installation carry-over.

The coefficient is determined on the basis of a so-called relative wall adhesion factor using a method specially developed for this purpose. Refer to TNO report I-96-31006 *Carry-over of a number of critical substances in cattle feed and the relationship to their characteristic properties*.

---

<sup>1</sup> Relevant lines are lines on which (products with) feed additives for which a residue norm has been determined in the table in Chapter 3 or veterinary medical products and also products with a determined residue norm are produced and/or transported.

The relationship between the relative wall adhesion factor and the co-efficient is shown in the following table.

Relative wall adhesive factor according to the established method.	Coefficient
< 1	1
≥ 1 and < 2	2
≥ 2 and < 3	2,5
unknown, ≥ 3	3

### 2.2.3 Carry-over and flush batches

The actual carry-over of additives and carry-over or veterinary medical products must be calculated in order to establish the number of flushes. This carry-over can be calculated by multiplying the installation carry-over by the coefficient.

This coefficient can be used to calculate how many flush batches are minimally required to remain under the established residue norms. A sample calculation follows.

#### Example:

Broiler feed with nicarbazine	: 80 ppm
Company's own carry-over in installation:	: 5 %
Coefficient	: "1"
Maximum residue norm for broiler feed for the last five days:	: 0.5 ppm
Calculation of actual carry-over = company's own carry-over x coefficient	
=	0.05 (5%) x 1 = 0.05
Calculation:	
- batch a	broiler feed 80 ppm
- batch a+1	follow-on feed 4 ppm (= 0.05 x 80)
- batch a+2	follow-on feed 0.2 ppm (= 0.05 x 4)
The second batch complies with the residue norm for broiler feed in the final fattening phase. Therefore a first flush batch must be produced with a non-critical feed.	

### 2.2.4 Items for attention and other remarks

The supplementary instructions for use relate to the sequence of production operations in the installation. It is also necessary for the participant to establish company requirements and procedures in order to comply with the residue norms for:

- a. transport (sequence) and storage (sequence)
- b. intake of premixes, additives and veterinary medical products.

The participant must check that the prescribed residue norms are not exceeded. If an infringement of these residue norms is detected, the instructions for use and procedures must be modified.

The coefficients and the minimum carry-over levels calculated from them may be deviated from provided that the carry-over is measured using the relevant product itself.

## **2.3 Premix**

### 2.3.1 General

The objective of these supplementary instructions is that compound feed producers must be able to use premixes from GMP<sup>+</sup>-certified manufacturers in producing compound feeds, without exceeding the maximum carry-over levels.

Carry-over of critical additives and veterinary medicines also occurs in the preparation of premixes. In order to prevent GMP<sup>+</sup>-certified compound feed mixers from exceeding the standards for coccidiostats, histomonostats and critical veterinary medical products because of excessive levels in premixes, a general rule of thumb is that no more than 50% of the residue norm as stated for compound feed may be used up as a result of the premixes used.

The maximum level in the premix must be derived from the dosage of the premix in the compound feed. Carry-over of coccidiostats, histomonostats and critical veterinary medical products may take place via direct and indirect contamination.

### 2.3.2 Direct contamination

Direct contamination is possible through use of a premix destined for an animal feed for which a maximum residual level has been established. The premix producer is to ensure through his GMP<sup>+</sup> feed safety system that no more than 50% of the residue norm as stated for that compound feed is used up via the premix.

For any flush batches required, the relevant coefficient as established for that product should be adopted.

### 2.3.3 Indirect contamination

In order to achieve extremely low residue norms in premixes, producers of premixes will have to first produce a number of batches for a non-critical use following the production of premixes with coccidiostats, histomonostats and critical veterinary medicines. A premix which is produced subsequent to one prepared with a coccidiostats or histomonostats (a so-called flush batch) may still contain such high levels of coccidiostats or histomonostats that this can cause problems for the compound feed producer.

Compound feed manufacturers use these premixes mainly in animal feeds which are also used to flush an installation clean. In certain cases the level of critical additives is so high that, together with the company's own carry-over levels, the residue norms in compound feeds are exceeded.

### 3. RESIDUE NORMS FOR CRITICAL ADDITIVES

#### 3.1 Summary of residue norms for coccidiostats and histomonostats according to Directive 2002/32/EC amending Annex I to Directive 2002/32/EC

Additives	Products intended for animal feed <sup>(2)</sup>	Maximum content in mg/kg (ppm) relative to a feedingstuff with a moisture content of 12 %
Lasalocid sodium	Feed materials	1,25
	Compound feed for:	
	- dogs, calves, rabbits, equine species, dairy animals, laying birds, turkeys (> 12 weeks) and chickens reared for laying (> 16 weeks)	1,25
	- chickens for fattening, chickens reared for laying (< 16 weeks) and turkeys (< 12 weeks) for the period before slaughter in which the use of lasalocid sodium is prohibited (withdrawal feed)	1,25
	- other animal species	3,75
	Premixtures for use in feed in which the use of lasalocid sodium is not authorised	<sup>(3)</sup>
Narasin	Feed materials	0,7
	Compound feed for:	
	- turkeys, rabbits, equine species, laying birds and chickens reared for laying (> 16 weeks)	0,7
	- chickens for fattening for the period before slaughter in which the use of narasin is prohibited (withdrawal feed)	0,7
	- other animal species	2,1
	Premixtures for use in feed in which the use of narasin is not authorised.	<sup>(3)</sup>
Salinomycin sodium	Feed materials	0,7
	Compound feed for:	
	- equine species, turkeys, laying birds and chickens reared for laying (> 12 weeks)	0,7
	- chickens for fattening, chickens reared for laying (< 12 weeks) and rabbits for fattening for the	0,7

<sup>2</sup> Without prejudice to the authorised levels in the frame of Regulation (EC) No 1831/2003 of the European Parliament and of the Council of 22 September 2003 on additives for use in animal nutrition.

<sup>3</sup> The maximum level of the substance in the premixture is the concentration which shall not result in a level of the substance higher than 50 % of the maximum levels established in the feed when the instructions for use of the premixture are followed.

Additives	Products intended for animal feed <sup>(2)</sup>	Maximum content in mg/kg (ppm) relative to a feedingstuff with a moisture content of 12 %
	period before slaughter in which the use of salinomycin sodium is prohibited (withdrawal feed)	
	- other animal species	2,1
	Premixtures for use in feed in which the use of salinomycin sodium is not authorised.	<sup>(3)</sup>
Monensin sodium	Feed materials	1,25
	Compound feed for:	
	- equine species, dogs, small ruminants (sheep and goat), ducks, bovine, dairy cattle, laying birds, chickens reared for laying (> 16 weeks) and turkeys (> 16 weeks)	1,25
	- chickens for fattening, chickens reared for laying (< 16 weeks) and turkeys (< 16 weeks) for the period before slaughter in which the use of monensin sodium is prohibited (withdrawal feed)	1,25
	- other animal species	3,75
	Premixtures for use in feed in which the use of monensin sodium is not authorised.	<sup>(3)</sup>
Semduramicin sodium	Feed materials	0,25
	Compound feed for:	
	- laying birds and chickens reared for laying (> 16 weeks)	0,25
	- chickens for fattening for the period before slaughter in which the use of semduramicin sodium is prohibited (withdrawal feed)	0,25
	- other animal species	0,75
	Premixtures for use in feed in which the use of semduramicin sodium is not authorised.	<sup>(3)</sup>
Maduramicin ammonium alpha	Feed materials	0,05
	Compound feed for:	
	- equine species, rabbits, turkeys (> 16 weeks), laying birds and chickens reared for laying (> 16 weeks)	0,05
	- chickens for fattening and turkeys (< 16 weeks) for the period before slaughter in which the use of maduramicin ammonium alpha is prohibited (withdrawal feed)	0,05

Additives	Products intended for animal feed (2)	Maximum content in mg/kg (ppm) relative to a feedingstuff with a moisture content of 12 %
	- other animal species	0,15
	Premixtures for use in feed in which the use of maduramicin ammonium alpha is not authorised.	(3)
Robenidine hydrochloride	Feed materials	0,7
	Compound feed for:	
	- laying birds and chickens reared for laying (> 16 weeks)	0,7
	- chickens for fattening, rabbits for fattening and breeding and turkeys for the period before slaughter in which the use of robenidine hydrochloride is prohibited (withdrawal feed)	0,7
	- other animal species	2,1
	Premixtures for use in feed in which the use of robenidine hydrochloride is not authorised.	()
Decoquinat	Feed materials	0,4
	Compound feed for:	
	- laying birds and chickens reared for laying (> 16 weeks)	0,4
	- chickens for fattening for the period before slaughter in which the use of decoquinat is prohibited (withdrawal feed)	0,4
	- other animal species	1,2
	Premixtures for use in feed in which the use of decoquinat is not authorised	(3)
Halofuginone hydrobromide	Feed materials	0,03
	Compound feed for:	
	- laying birds, chickens reared for laying (> 16 weeks) and turkeys (> 12 weeks)	0,03
	- chickens for fattening and turkeys (< 12 weeks) for the period before slaughter in which the use of halofuginone hydrobromide is prohibited (withdrawal feed)	0,03
	- other animal species other than chickens reared for laying (< 16 weeks)	0,09
	Premixtures for use in feed in which the use of halofuginone hydrobromide is not authorised	(3)

Additives	Products intended for animal feed <sup>(2)</sup>	Maximum content in mg/kg (ppm) relative to a feedingstuff with a moisture content of 12 %
Nicarbazin	Feed materials	0,5
	Compound feed for:	
	- equine species, laying birds and chickens reared for laying (> 16 weeks)	0,5
	- chickens for fattening for the period before slaughter in which the use of nicarbazin (in combination with narasin) is prohibited (withdrawal feed)	0,5
	- other animal species	1,5
	Premixtures for use in feed in which the use of nicarbazin (in combination with narasin) is not authorised	<sup>(3)</sup>
Diclazuril	Feed materials	0,01
	Compound feed for:	
	- laying birds, chickens reared for laying (> 16 weeks) and turkeys for fattening (> 12 weeks)	0,01
	- rabbits for fattening and breeding for the period before slaughter in which the use of diclazuril is prohibited (withdrawal feed).	0,01
	- other animal species other than chickens reared for laying (< 16 weeks), chickens for fattening and turkeys for fattening (< 12 weeks)	0,03
	Premixtures for use in feed in which the use of diclazuril is not authorised.	<sup>(3)</sup>
Feed additives not registered in the EU which are intended for use in feeds for export outside the EU.	All feeds intended for marketing within the EU.	1

### 3.2 Additional information for some coccidiostats and histomonostats\*

Trade name	Manufacturer	Importer	Concentration	Coefficient	
				Pigs	Other
<b>Compound of narasin and nicarbazine (E 772)</b>					
Maxiban G 160 premix	Eli Lilly	Eli Lilly Nederland BV	80 g/kg narasin 80 g/kg nicarbazine	5	1
<b>Lasalocid sodium (E 763)</b>					
Avatec 15% CC	Roche	Alpharma	15g/100g Lasalocid-sodium	1	1
<b>Robenidine-hydrochloride (E758)</b>					
Cycostat 66G	Roche	Alpharma	66g/kg Robenidine-hydrochloride	1	1
<b>Decoquinat (E756)</b>					
<b>Monensin-sodium (E757)</b>					
Elancoban G200 premix	Eli Lilly	Eli Lilly Nederland BV	200g/kg monensin sodium	1	1
Coxidin (5 1 701)	Huvepharma	Huvepharma NV	200g/kg monensin natrium	1	1
<b>Narasin (E765)</b>					
Monteban G100 premix	Eli Lilly	Eli Lilly Nederland BV	100g/kg narasin	1	1
<b>Halofuginone-hydrobromine (764)</b>					
Stenoro	Huvepharma	Huvepharma NV	6 g/kg halofuginone hydrobromide	1	1
<b>Diclazuril (E 771)</b>					
Clinacox 0,5 % Premix	Janssen Pharmaceutica nv	Janssen Pharmaceutica nv	0.5g/100g diclazuril	2	2
<b>Salinomycin-sodium (E 766)</b>					
Sacox 120 microGranulate	Huvepharma	Huvepharma NV	120g/kg salinomycine	1	1
Other	Other	Other	N/a	3	3

\*: This list can be extended at new available data of relative wall adhesion test

## 4. RESIDUE NORMS FOR CRITICAL VETERINARY MEDICAL PRODUCTS

### 4.1 Summary of residue norms for critical veterinary medical products

Veterinary medical product	Established maximum residue norms in animal feeds <sup>4</sup> in ppm				Established precautionary measure for dairy cattle
	laying hens <sup>5</sup>	slaughter chickens <sup>6</sup> fattening turkeys <sup>6</sup>	pigs <sup>7</sup>	dairy cattle <sup>8</sup>	
Sulfadiazine sodium	5	8	1	1	
Sulfamethoxazol	5	8	1	1	
Doxycycline	8	8	10	- <sup>9</sup>	1 batch <sup>10</sup>
Oxytetracycline	1	10	10	- <sup>9</sup>	1 batch <sup>10</sup>
Ivermectine	0.1	0.1	0.1	- <sup>9</sup>	1 batch <sup>10</sup>
Tiamuline	1	8	10	- <sup>9</sup>	1 charge <sup>10</sup>
Tilmicosine	1	4	10	- <sup>9</sup>	1 charge <sup>10</sup>
Trimethoprim	Linked to Sulfadiazine and therefore sufficiently guaranteed				
for export (not in NL for animal feed registered materials) and for any new registrations in the Netherlands	1	1	1	1	

<sup>4</sup> The max. residue norms for premixes amount to maximum. 50% of the indicated residue norms for animal feeds calculated on an animal feed basis

<sup>5</sup> feed given to laying animals

<sup>6</sup> feed given from 5 days before slaughter

<sup>7</sup> feed given from 28 days before slaughter

<sup>8</sup> feed given to milk-producing cows, goats and sheep

<sup>9</sup> At this moment there is insufficient knowledge available in order to be able to establish a carry-over norm for this additive for these categories.

<sup>10</sup> Dairy cow feed may not immediately be produced on a production line which has just produced feed with these additives.

#### 4.2 Additional information per critical veterinary medical product

Trade name	Registration holder	Registration number	Concentration	Coefficient		max dosing
				Pigs	Other	
<b>Sulphadiazine sodium (trimethoprim)</b>						
Feedmix Trim/sul 80/420	Aesculaap BV	RegNL 1808	77 g/kg	5	3	385 ppm (5kg/t)
Trimethosulf premix	Eurovet	RegNL 7589	62.5 g/kg	5	2	312 ppm ( 5kg/t) 625 ppm ( 10kg/t)
Feedmix sulfatrim	Dopharma	RegNL 8541	60 g/kg	5	3	480 ppm ( 8kg/t) 600 ppm ( 10kg/t)
<b>Sulphamethoxazol (trimethoprim)</b>						
Feedmix TS	Dopharma	RegNL 8674	50 g/kg	5	3	250 ppm (5kg/t) 500 ppm (10kg/t)
<b>Bromine hexine hydrochloride/doxycyclinehyclate</b>						
Feedmix Doxy-B	Dopharma	RegNL 2588	20 g/kg	2,5	2,5	100 ppm (5kg/t) 300 ppm (15kg/t)
Pulmodox 5% Premix	Virbac Laboratories	RegNL 9826	50g/kg	2,5	2,5	250 ppm (5kg/t)
Doxyprex	Industrial Veterinaria S. A.	RegNL 10393	100g/kg	2,5	2,5	250 ppm (2,5kg/t)
<b>Oxytetracycline</b>						
Feedmix V4	Dopharma	RegNL 2158	80g/kg	3	3	400 ppm (5kg/t) 800 ppm (10kg/t)
Feedmix Oxy 10%	Dopharma	RegNL 2004	100g/kg	3	3	300 ppm (3kg/t) 700 ppm (7kg/t)
OTC-400	Framelco B.V.	RegNL 7254	80g/kg	3	3	400 ppm (5kg/t)
OXY-400 V4	Eurovet	RegNL 7277	80g/kg	3	3	400 ppm (5kg/t)
<b>Ivermectine</b>						
Ivomec Premix	Merial	RegNL 8731	6/kg <sup>11</sup>	3	3	10 ppm <sup>12</sup>
Noromectin Premix 0,6% G/G voor varkens	Norbrook Laboratories Ltd	RegNL 10465	6g/kg Fout! Bladwijzer niet gedefinieerd.	3	3	10 ppm Fout! Bladwijzer niet gedefinieerd.
<b>Tiamulin</b>						
Tiamutin 10% premix	Novartis	RegNL 8015	100g/kg	3	3	30-40ppm
Denagard 2% premix	Novartis	RegNL 8016	20g/kg	3	3	30-40ppm

<sup>11</sup> The product is made by mixing 0.33 kg premix (concentration 6 g/kg) in 5 kg premix.

<sup>12</sup> Dosing for sow feed, calculated on the basis of dosing 100 microgrammes ivermectine per kg delivered weight.

Trade name	Registration holder	Registration number	Concentration	Coefficient		max dosing
Tialin 10% premix	Eurovet	RegNL 10178	100g/kg	3	3	30-40ppm
Tialin 2% premix	Eurovet	RegNL 10177	20g/kg	3	3	30-40ppm
Vetmulin 2% premix	Huvepharma N.V.	RegNL 100731	20g/kg	3	3	175ppm
Vetmulin 10% premix for medicated feed	Huvepharma N.V.	RegNL 101337	100g/kg	3	3	175ppm
<b>Tilmicosine</b>						
Pulmotil G40 PREMIX	Eli Lilly/Elanco Health	RegNL 9166	40g/kg	3	3	tot 400 ppm
Pulmotil G100 PREMIX	Eli Lilly/Elanco Health	RegNL 9167	100g/kg	3	3	tot 400 ppm
Pulmotil G200 PREMIX	Eli Lilly/Elanco Health	RegNL 9168	200g/kg	3	3	tot 400 ppm
Pneumotil G40 PREMIX	Eli Lilly/Elanco Health	RegNL 10368	40g/kg	3	3	tot 400 ppm
Tilmovet 10%, premix for medicated feed for pigs	Huvepharma N.V.	RegNL 100528	100g/kg	3	3	400 ppm
Tilmovet 4%	Huvepharma N.V.	RegNL 100739	40g/kg	3	3	400 ppm
Tilmovet 20%, premix for medicated feed for pigs	Huvepharma N.V.	RegNL 100742	200g/kg	3	3	400 ppm
for export (not in NL for animal feed registered materials) and for any new registrations in the Netherlands		Reg NL ....	....	3	3	....