

 Technical Specifications

# TS1.7 - Monitoring

Version EN: 1 January 2024





# Index

<b>WELCOME</b> .....	<b>4</b>
<b>1. GENERAL MONITORING REQUIREMENTS</b> .....	<b>4</b>
1.1. MONITORING PLAN.....	4
1.2. MONITORING FREQUENCY.....	5
1.3. SAMPLING.....	6
1.4. ANALYSING.....	6
1.4.1. <i>Analysis method</i> .....	6
1.4.2. <i>Sharing analysis results</i> .....	6
1.5. COLLECTIVE MONITORING PLAN .....	7
<b>2. MONITORING PROTOCOL OF AFLATOXIN B1 IN MAIZE AND BY-PRODUCTS OF MAIZE</b> .....	<b>8</b>
2.1. GENERAL REQUIREMENTS .....	8
2.1.1. <b>Scope</b> .....	8
2.1.2. <b>Application</b> .....	8
2.1.3. <b>Countries of cultivation</b> .....	8
2.1.4. <b>Place of sampling</b> .....	9
2.1.5. <b>Sample preparation</b> .....	9
2.1.6. <b>Analysing</b> .....	9
2.2. REQUIREMENTS PER CLASSIFICATION OF COUNTRIES OF CULTIVATION .....	10
2.2.1. <b>High risk countries</b> .....	10
2.2.2. <b>Medium risk countries</b> .....	13
2.2.3. <b>Low risk countries</b> .....	16
<b>3. MONITORING PROTOCOL OF SALMONELLA IN FEED</b> .....	<b>17</b>
3.1. GENERAL REQUIREMENTS .....	17
3.1.1. <b>Scope</b> .....	17
3.1.2. <b>Application</b> .....	17
3.2. MONITORING FREQUENCY.....	17
3.2.1. <b>Compound feed for poultry</b> .....	18
3.2.2. <b>Compound feed (except feed for poultry)</b> .....	18
3.2.3. <b>Feed materials</b> .....	18
3.2.4. <b>Feed additives and premixtures</b> .....	19
3.3. ANALYSING.....	19
<b>4. MONITORING PROTOCOL OF ANIMAL PROTEIN</b> .....	<b>20</b>
4.1. GENERAL REQUIREMENTS .....	20
4.1.1. <b>Scope</b> .....	20
4.1.2. <b>Application</b> .....	20
4.2. MONITORING FREQUENCY.....	20



**5. MONITORING PROTOCOL OF OILS AND FATS AS REGARDS DIOXIN AND DIOXIN LIKE PCB'S**  
**21**

5.1. GENERAL REQUIREMENTS .....21

**5.1.1. Scope**.....21

**5.1.2. Application**.....21

5.2. MONITORING FREQUENCY.....22

5.3. POSITIVE RELEASE .....25

**6. MONITORING PROTOCOL FOR BY-PRODUCTS OF THE OILS AND FATS INDUSTRY ..... 30**

6.1. GENERAL REQUIREMENTS .....30

**6.1.1. Scope**.....30

**6.1.2. Application**.....30

6.2. DEFINITIONS.....30

6.3. MONITORING FREQUENCY.....31

6.4. SAMPLING.....31

6.5. ANALYSING.....31

**6.5.1. Information to the client**.....31

**APPENDIX 1: PRODUCT NAME AND NUMBER ACCORDING TO REG. (EU) NO 68/2013 ..... 32**



# Welcome

This Feed Certification scheme document helps you to provide feed safety world-wide. By meeting the requirements set by GMP+ International together with our stakeholders, we aim to help you get the feed certification you need. Please read the information in this document carefully.

*Let's make this work together!*

## 1. General monitoring requirements

The requirements listed in this document are **in addition** to those set out in the R1.0 *Feed Safety Management Requirements* document.

### 1.1. Monitoring plan

Information (like EWS, RASFF or other signals about possible hazards) that might influence the established monitoring plan must be assessed. If necessary, the monitoring plan must be adapted immediately.

The GMP+ certified company may make use of representative monitoring results from other companies (for example: suppliers). This particularly applies to monitoring results for undesirable substances where the level theoretically speaking no longer changes, such as heavy metals, pesticides, dioxin.

*Note: 'representative' does not necessarily mean: 'from the delivered batch'.*

If there is any doubt, uncertainty or unclearness about the representativeness of the monitoring results from other companies, the certified company must verify on the representativeness.

The GMP+ certified company must determine if specific monitoring requirements described in this document are applicable and must therefore be implemented in the monitoring plan of the certified company.

In case of overlap between different monitoring requirements in this document or other GMP+ FSA documents, the GMP+ certified company must apply the strictest monitoring requirements.

#### Helpful tip:

Special attention should be given to the representativeness of the

- monitoring results received from suppliers (for example: qualifications of the laboratory; used method; detection limit);
- sampling and;
- samples (for example: correct method; do they really represent the feed).



## 1.2. Monitoring frequency

The monitoring frequency must give assurance that all identified hazards and determined risks remain under control.

The GMP+ certified company must follow the minimum monitoring frequencies as established in the monitoring protocols in this document. If the hazard analysis shows that additional monitoring is needed, the GMP+ certified company must increase the monitoring frequency in accordance with the result of the hazard analysis.

### Helpful tip:

Remember that, the monitoring frequency (on a yearly basis) of feed materials can be calculated using the following formula:

$$\text{Frequency} = \frac{\sqrt{\text{Volume}} * \text{'likelihood of occurrence'} * \text{'severity'}}{100}$$

Variable	Explanation
Frequency	The number of samples to be monitored (on a yearly basis)
Volume	<p>Volume in tons of feed materials per year. In principle, the number of samples to be monitored is based on the quantity of feed material which is produced, traded, processed or stored. As the quantity of feed material increases, the number of samples per ton will decrease.</p> <p>Kilograms must be assumed for some feed materials for which, on a yearly basis, only a small quantity is produced, traded or processed.</p>
Likelihood of occurrence	<p>The default value for likelihood of occurrence is 1. The GMP+ certified company may raise or lower this value if reasons are given. The following considerations may apply to this:</p> <ol style="list-style-type: none"> <li>History: see also below</li> <li>Seasonal influences</li> <li>Possibility of recontamination. This applies in particular to microbiological parameters.</li> <li>New source / new suppliers</li> <li>Have there been recent incidents.</li> </ol> <p>It is up to the certified company to decide that the likelihood of occurrence value can be lowered.</p> <p>The certified company must select a likelihood of occurrence value which is below one on the basis of (historical) monitoring results. The following must be kept in mind:</p> <ol style="list-style-type: none"> <li>Monitoring results must be representative. The historic monitoring results which are considered as representative may differ per undesirable substance. <ul style="list-style-type: none"> <li>For some undesirable substances the monitoring results for an area can be considered to be representative while, for other undesirable substances, only monitoring results for the same production location is representative.</li> </ul> </li> <li>Monitoring results from GMP+ International's GMP+ Monitoring database may also be used in determining monitoring frequency if the participant can show \ representativeness.</li> </ol>
Severity	<p>This factor expresses the degree of harmfulness of an undesirable substance. For the value for severity use can be made of information of the Feed Support Products (FSP):</p> <p style="text-align: center;">Severity is great <span style="float: right;">factor 5</span></p>



Variable	Explanation																						
	Severity is moderate factor 3 Severity is small factor 1  This leads to the following factors: <table border="1"> <thead> <tr> <th>Undesirable substance</th> <th>Value</th> </tr> </thead> <tbody> <tr> <td>Heavy metals</td> <td>5</td> </tr> <tr> <td>Pesticides</td> <td>5</td> </tr> <tr> <td>Insecticides</td> <td>5</td> </tr> <tr> <td>Veterinary medicinal products</td> <td>5</td> </tr> <tr> <td>Mycotoxins</td> <td>5</td> </tr> <tr> <td>Salmonella</td> <td>5</td> </tr> <tr> <td>Fungi</td> <td>3</td> </tr> <tr> <td>Animal components</td> <td>5</td> </tr> <tr> <td>Dioxin</td> <td>5</td> </tr> <tr> <td>Nitrites</td> <td>5</td> </tr> </tbody> </table> The established values are all high. This seems logical as these are risky undesirable substances.	Undesirable substance	Value	Heavy metals	5	Pesticides	5	Insecticides	5	Veterinary medicinal products	5	Mycotoxins	5	Salmonella	5	Fungi	3	Animal components	5	Dioxin	5	Nitrites	5
Undesirable substance	Value																						
Heavy metals	5																						
Pesticides	5																						
Insecticides	5																						
Veterinary medicinal products	5																						
Mycotoxins	5																						
Salmonella	5																						
Fungi	3																						
Animal components	5																						
Dioxin	5																						
Nitrites	5																						
<b>Note:</b> a. Calculated frequencies should always be rounded upwards. The minimum frequency is 1. b. Calculation of the monitoring frequency of liquid or moist feed can be based on 88% dry matter content.																							

### 1.3. Sampling

Unless the monitoring protocols in this document state otherwise, the GMP+ certified company must take samples in accordance with the requirements as laid down in document TS 1.6 *Sampling*.

### 1.4. Analysing

#### 1.4.1. Analysis method

The analysis must be carried out by a laboratory approved for this under the GMP+ FSA module. See TS 1.2 Purchase.

#### 1.4.2. Sharing analysis results

The results of the analyses that are carried out within the framework of applying the monitoring protocols in this document must be uploaded in the GMP+ Monitoring database. The analysis results must be uploaded within a month from the date of issuance of the Certificate of analysis and shared anonymously with the GMP+ Community in the GMP+ Monitoring database.



**+** Helpful tip 1:

Be aware to enter the correct value (in mg/kg). A laboratory might report the results in ppb's. Be sure to check on this. If so, please divide this result by 1000 before entering in the database. Example: 3 ppb = 0.003 mg/kg.

**+** Helpful tip 2:

The GMP+ certified company who makes use of analysis results from other companies (for example suppliers) should not enter the results into the GMP+ Monitoring database.

## 1.5. Collective monitoring plan

It is possible for GMP+ certified companies to carry out their monitoring plan together (in a collective monitoring plan). The following requirements must be applied with respect to this option:

- a) The collective monitoring plan must comply with the GMP+ requirements..
- b) The scope of the monitoring plan must be established ('which feed is included') and which companies are participating.
- c) The collective monitoring plan must be representative for the feed which the manufacturers produce, trade, treat and / or process. Its representativeness must be motivated.
- d) All the participating companies must obtain all the relevant sampling and monitoring results.



## 2. Monitoring protocol of Aflatoxin B1 in Maize and By-products of maize

### 2.1. General requirements

#### 2.1.1. Scope

This protocol gives specific requirements for sampling and analysing Aflatoxin B1 in:

- maize, processed or unprocessed and
- by-products of maize,

which will be delivered in the GMP+ chain. It applies to all maize harvests.

The monitoring requirements in this protocol must be applied either to the maize or to the maize by-product.

#### 2.1.2. Application

This protocol applies to the GMP+ certified company which trades or processes the products as mentioned in § 2.1.1.

The producer of the maize by-product must apply the protocol to the end product. Food producing companies that purchase and process maize under the conditions of Regulation (EU) No. 1881/2006 (maximum levels for contaminants in foodstuff) are allowed to apply the protocol to the incoming flow of maize if they have a motivation in writing of the concentration factor in the production process and also do a risk-based monitoring on the maize by-product.

If a batch of maize or a maize by-product has already been analysed by a GMP+ certified supplier, this batch is not required to be analysed again. This is also applicable when the supplier is participating in another, accepted feed safety assurance scheme, under the condition that the analysis results are available.

#### 2.1.3. Countries of cultivation

The countries of cultivation<sup>1</sup> of maize are classified into 3 categories: High, Medium and Low. Sampling and analysis of maize from a high risk country must be performed in accordance with the requirements in § 2.2.1.

Maize from a Medium risk country must be sampled and analysed in accordance with § 2.2.2. For Low risk countries, sampling and analysis must be in accordance with § 2.2.3.

To consult the classification of countries of cultivation click [here](#).

The country of cultivation of the maize must always be known to every link in the supply chain, and the customer must be informed, including the end user.

---

<sup>1</sup> If applicable, a country can be divided in different regions.





**+** Helpful tip:

With 'end user' is meant the GMP+ FSA certified company that delivers compound feed to the farmer (= the final link in the GMP+ chain).

### 2.1.4. Place of sampling

Batches must be sampled at loading (country of cultivation) or at discharge (country of delivery). In case the protocol is applied at discharge, the batch is determined by the means of transport in which the maize or maize by-product is then loaded.

**+** Helpful tip:

This means when a seagoing vessel is discharged in the country of delivery and the maize is directly loaded in an inland waterway vessel, the inland waterway vessel must be considered as a batch and has to be sampled.

### 2.1.5. Sample preparation

The GMP+ certified company applying this protocol must send at least a 4 kg sample of maize (by-product) to the laboratory for preparation and analysis. The preparation and analysis by the laboratory must be in accordance with the following conditions:

- a) The sample must be fully grinded and homogenized before the final sample and out of it the sample for analysis must be taken.
- b) The final sample must at least be 500 grams.
- c) The sample for analysis must be prepared from the final sample.
- d) The remains of the final sample must be retained for re-analysis.

### 2.1.6. Analysing

#### 2.1.6.1. Analyse method

The sample for analysis must be analysed on Aflatoxin B1.



## 2.2. Requirements per classification of countries of cultivation

### 2.2.1. High risk countries

#### 2.2.1.1. Application

For maize from high risk countries, the first link in the chain is responsible for a correct application of this protocol.

#### 2.2.1.2. Monitoring frequency

Each final sample must be analysed.

#### 2.2.1.3. Size of batches

The batch size of maize or maize by-product is related to the means of transport and must have common characteristics, such as origin, variety, type of packing, packer, consignor or labelling.

Means of transport	Maximum batch size
Seagoing vessel	Max. 2,000 tons
Inland waterway vessel	Inland waterway vessel
Train	Max. 1,500 tons
Truck, from Storage/ warehouse, production location or collection point	Max. 1,000 tons

#### 2.2.1.4. Sampling

##### 2.2.1.4.1. Sampling method

The sampler must take representative samples in accordance with the described in Regulation (EC) No. 152/2009, including the amendments regulated by Regulation (EU) No. 691/2013, under the following conditions:

- sampling must be undertaken of the whole batch. Sampling of part of the whole batch is not acceptable within the framework of this protocol;  
If the whole batch in the warehouse is not accessible for sampling, a sampling plan must be made and retained as documented information. The sampling plan must cover the accessible part of the batch. The part of the batch that has not yet been sampled and monitored, must be monitored once it's possible and safe to get access;
- each aggregate sample must not be less than 10 kg;
- the sample to be send to the laboratory for preparation and analysis must not be less than 4 kg. See § 2.1.5 and 2.1.6 for requirements regarding sample preparation and analysis by the laboratory.



In case of direct ship-to-ship transshipment (from a seagoing vessel, coaster, inland waterway vessel to an inland waterway vessel) the method described in "GAFTA sampling rules No. 124" is allowed under the following conditions:

- d) a representative sample must be taken during loading or unloading of the means of transport.
- e) at least 20 incremental samples per 500 tons and at least 40 incremental samples for batches smaller than 1,000 tons.
- f) maximum volume of the incremental sample: 1kg
- g) minimum 20 kg per (sub)batch of 500 tons
- h) at least 1 final sample, which shall not be less than 4 kg. Each final sample must be fully grinded and made homogeneous by the laboratory. See § 2.1.5 and 2.1.6 for requirements regarding sample preparation and analysis by the laboratory.

**Note:** In cases where maize is stored longer than 3 month in a silo and is not accessible for sampling before delivery to the customer, sampling may be carried out during loading. The results must be available before unloading at the customer or at least before the next processing step or feeding (if there is a written agreement between the seller and the customer).

#### 2.2.1.4.2. *Sample taker*

Each batch must be sampled by an independent superintendent organization accredited according to:

- a) ISO 17020 for an appropriate scope, or alternatively;
- b) ISO 9001 for an appropriate scope in combination with a GAFTA<sup>2</sup> approval as superintendent for sampling in a relevant application domain (e.g. Animal feed).

#### 2.2.1.4.3. *Other requirements*

The period between sampling and delivery must not be longer than three months.

It is possible to separate a batch at a storage location in the country of cultivation within the framework of direct transport per inland waterway vessel, train or truck to the end user. The following additional requirements apply:

- a) The batch must be kept in quarantine (separate and identifiable) at the storage location in the country of cultivation.
- b) The location must be set up in such a way that representative (cross-section) samples can be taken.

#### 2.2.1.4.4. *Information to the Client and End user*

Positive release: The analysis results (by means of a certificate of analysis issued by an accredited organization (see § 2.2.1.4.2) or an analytical report issued by a GMP+ Registered laboratory,) must accompany the batch, so each link in the chain is informed.

The end user must be informed about the results of the analysis that have been carried out before using or processing the maize or maize by-product in feed.

---

<sup>2</sup> Website GAFTA : <https://www.gafta.com/members/superintendents>



There must be a clear link between the delivered batch and the certificate of analysis / analytical report from an approved laboratory (positive release). The information must demonstrate that the sampling was conducted not longer than 3 months before the date of delivery.

In case of stored batches and re-analysis after 3 months, the highest measured Aflatoxin B1 value (from all sampling moments) is leading since it is not obvious that Aflatoxin B1 content could decrease over time. All analysis results applicable for the batch (also the expired results) must accompany the batch.

In case of maize by-products, the food producing company must declare in writing that he has applied the protocol to the incoming flow of maize.



## 2.2.2. Medium risk countries

### 2.2.2.1. Application

For maize from medium risk countries, the first link in the chain is responsible for a correct application of this protocol.

Only in case of direct delivery with trucks, the receiving company (in most cases the compound feed company) is responsible for correct application of this protocol.

In case of an end user receives maize from a Medium country by truck it is possible to process this maize

- In dairy feed, only after results of analysis are available.
- In all other feed, the results do not necessarily have to be available before processing. These results can be received later.

**Note:** This requirement may be different by another scheme. In those case, the first link in the chain is responsible for applying the protocol.

### 2.2.2.2. Monitoring frequency

Each final sample must be analysed.

### 2.2.2.3. Size of the batches

All batches must be sampled and analysed, whereby the batch of maize or maize by-product is related to the means of transport and must have common characteristics, such as origin, variety, type of packing, packer, consignor or labelling.

Means of transport	Maximum batch size
Seagoing vessel	Hold
Inland waterway vessel	Inland waterway vessel
Train	Train
Truck, from Storage/ warehouse, production location or collection point	Max. 2,000 tons

### 2.2.2.4. Sampling

#### 2.2.2.4.1. Sampling method

The sampler must take representative samples in accordance with the method described in Regulation (EC) No. 152/2009, including the amendments regulated by Regulation (EU) No. 691/2013, under the following conditions:

- a) sampling must be undertaken of the whole batch. Sampling of part of the whole batch is not acceptable within the framework of this protocol.  
If the whole cargo in the warehouse is not accessible for sampling, a sampling plan must be made and retained as documented information. that the sampling plan must cover the accessible part of the cargo. The part of the cargo that has not yet been sampled and monitored, must be monitored once it's possible and safe to get access.
- b) each aggregate sample must not be less than 10 kg.



- c) the sample to be send to the laboratory for preparation and analysis must not be less than 4 kg. See § 2.1.5 and 2.1.6 for requirements regarding sample preparation and analysis by the laboratory.

In case of direct ship-to-ship transshipment (from a seagoing vessel, coaster, inland waterway vessel to an inland waterway vessel) the method described in "GAFTA sampling rules No. 124" is allowed under the following conditions:

- d) a representative sample must be taken during loading or unloading of the means of transport.
- e) at least 20 incremental samples per 500 tons and at least 40 incremental samples for batches smaller than 1,000 tons.
- f) maximum volume of the incremental sample: 1kg
- g) minimum 20 kg per (sub)batch of 500 tons
- h) at least 1 final sample, which shall not be less than 4 kg. Each final sample must be fully grinded and made homogeneous by the laboratory. See § 2.1.5 and 2.1.6 for requirements regarding sample preparation and analysis by the laboratory.

**Note:** In cases where maize is stored longer than 3 month in a silo and is not accessible for sampling before delivery to the customer, sampling may be carried out during loading. The results must be available before unloading at the customer or at least before the next processing step or feeding (if there is a written agreement between the seller and the customer).

#### 2.2.2.4.2. *Sample taker*

For medium risk countries, each batch must be sampled by an independent superintendent organization accredited according to:

- a) ISO 17020 for an appropriate scope, or alternatively:
- b) ISO 9001 for an appropriate scope in combination with GAFTA<sup>3</sup> approval as superintendent for sampling in a relevant application domain (e.g. Animal feed).

In case of the direct transport by truck as described above, sampling can be performed and controlled by the GMP+ certified company in compliance with the requirements in document TS 1.6 *Sampling*, instead of the sampling rules as mentioned above.

#### 2.2.2.4.3. *Other requirements*

The period between sampling and delivery must not be longer than three months.

It is possible to separate a batch at a storage location in the country of cultivation within the framework of direct transport per inland waterway vessel, train or truck to the end user. The following additional requirements apply:

- a) The batch must be kept in quarantine (separate and identifiable) at the storage location in the country of cultivation.
- b) The location must be set up in such a way that representative (cross-section) samples can be taken.

---

<sup>3</sup> Website GAFTA : <https://www.gafta.com/members/superintendents>



#### 2.2.2.4.4. *Information to the Client and end User*

Positive release: The analysis results (by means of a certificate of analysis issued by an accredited organization (see § 2.2.2.4.2) or an analytical report issued by a GMP+ Registered laboratory must accompany the batch, so each link in the chain is informed.

The end user must be informed about the results of the analysis that have been carried out before using or processing the maize or maize by-product in feed (excluding deliveries by truck).

There must be a clear link between the delivered batch and the certificate of analysis / analytical report from an approved laboratory (positive release). The information must demonstrate that the sampling was conducted not longer than 3 months before the date of delivery.

In case of stored batches and re-analysis after 3 months, the highest measured Aflatoxin B1 value (from all sampling moments) is leading since it is not obvious that Aflatoxin B1 content could decrease over time. All analysis results applicable for the batch (also the expired results) must accompany the batch.

In case of maize by-products, the food producing company must declare in writing that he has applied the protocol to the incoming flow of maize.



### 2.2.3. Low risk countries

#### 2.2.3.1. Application

For maize from low risk countries, every GMP+ certified company is responsible for a correct application of this protocol, based on HACCP principles.

#### 2.2.3.2. Monitoring frequency

Final samples must be analysed based on a hazard analysis.

#### 2.2.3.3. Size of the batches

The batch of maize or maize by-product is related to the means of transport and must have common characteristics, such as origin, variety, type of packing, packer, consignor or labelling .

Means of transport	Maximum batch size
Seagoing vessel	According the hazard analysis of the GMP+ certified company
Inland waterway vessel	
Train	
Truck, from Storage/ warehouse, production location or collection point	

#### 2.2.3.4. Sampling

##### 2.2.3.4.1. Sampling method

The sampler must take representative samples in accordance with the requirements as described in document TS 1.6 *Sampling*.

##### 2.2.3.4.2. Sample taker

Sampling must be done, in accordance with the requirements as laid down in document TS 1.6 *Sampling*.

##### 2.2.3.4.3. Information to the client and end user

All links in the chain, including the end user, must be informed (on request) periodically about the analysis results and receive a summary or overview of the results of the application of this protocol.

In case of maize by-products, the food producing company must declare in writing that he has applied the protocol to the incoming flow of maize.





## 3. Monitoring protocol of Salmonella in feed

### 3.1. General requirements

#### 3.1.1. Scope

This protocol contains minimum monitoring requirements for Salmonella in feed.

Excluded from this scope are feed products in which Salmonella cannot survive due to the intrinsic properties of the feed products: the pH value, temperature and/or low water activity (Aw-value). The exclusion must be based on a documented validation.

 **Helpful tip:**

More information about Salmonella and the conditions under which Salmonella cannot survive can be found in the GMP+ factsheet Salmonella. This factsheet is found on the GMP+ International [Portal](#).

#### 3.1.2. Application

This protocol applies to the GMP+ certified company that:

- produces feed, or
- outsources the production of feed to another company. See TS 1.2 *Purchase* for the requirements for purchasing production or processing on a contract basis.

If responsibilities with regard to the application of this monitoring protocol are transferred to another company, this must be kept as documented information.

### 3.2. Monitoring frequency

The GMP+ certified company must ensure that the feed does not exceed the Salmonella limits, as laid down in TS 1.5 *Specific feed safety limits*.

The ongoing effectiveness of the control measures must be monitored in accordance with the below-mentioned minimum monitoring frequencies. Monitoring is done by analysing representative samples taken of the end-products as close as possible to the end of the production line.

 **Helpful tip:**

Please remind that when having positive Salmonella results you may decide to increase the monitoring frequency.



### 3.2.1. Compound feed for poultry

The GMP+ certified company that produces compound feed for poultry must sample and analyse the compound feed according to the monitoring frequency as specified in the following table:

Type of compound feed per target animal	Minimum number of samples to be analysed	Minimum number of samples when a validated control measure is applied*
Breeding animals kept as grandparents or great-grandparents	1 per 48 tons	1 per 144 tons
Chickens or turkeys reared for breeding animals other than grandparents and great-grandparents	1 per 120 tons	1 per 360 tons
Chickens or turkeys kept for breeding purposes	1 per 240 tons	1 per 720 tons
Broilers, laying hens and animals reared for laying hens	1 per 480 tons	1 per 1440 tons
Meat turkeys	1 per 720 tons	1 per 2160 tons

\*The validation must be kept as documented information.

#### + Helpful tip: 1

Be aware that the reduction of the monitoring frequency may not be possible due to national feed related legislation.

#### + Helpful tip: 2

A validated control measure is a control measure that has proven to be effective in controlling Salmonella in feed. Heat treatment and acidification are well known and often-used control measures.

### 3.2.2. Compound feed (except feed for poultry)

The GMP+ certified company that produces other compound feed than those intended for poultry must sample and analyse the compound feed at least once per 10,000 tons.

### 3.2.3. Feed materials

The GMP+ certified company that produces feed materials must sample and analyse each feed material according to the monitoring frequency as specified in the following table:

Annual production of feed material	Minimum number of samples to be analysed	Minimum number of samples when a validated control measure is applied*
Less than or equal to 50,000 tons	8 per year	2 per year
More than 50,000 tons	20 per year	5 per year

\*The validation must be kept as documented information.

#### + Helpful tip: 1

See helpful tips 1 and 2 in § 3.2.1



### 3.2.4. Feed additives and premixtures

The GMP+ certified company that produces feed additives or premixtures must sample and analyse the feed additives and premixtures based on HACCP.

## 3.3. Analysing

Salmonella-positive results must be serological classified. See R 1.0 *Feed Safety Management Systems Requirements* for the requirements on how to handle non-conform products.



## 4. Monitoring protocol of animal protein

### 4.1. General requirements

#### 4.1.1. Scope

This protocol contains minimum monitoring requirements for tissue proteins from mammals in compound feed, including wet mixes, for ruminants.

#### 4.1.2. Application

This protocol applies to the GMP+ certified company that produces compound feed, including wet mixes, for ruminants.

### 4.2. Monitoring frequency

Monitoring is done by analysing the samples taken of end-products on the presence of tissue proteins from mammals in accordance with the below-mentioned minimum frequency:

<b>Production in tons per year</b>	<b>Minimum number of samples to be analysed</b>
Less than 10,000	1 per quarter
Between 10,000 and 40,000	2 per quarter
More than 40,000	3 per quarter



## 5. Monitoring protocol of Oils and Fats as regards dioxin and dioxin like PCB's

### 5.1. General requirements

#### 5.1.1. Scope

This protocol provides specific requirements<sup>4</sup> for monitoring the levels of dioxin and dioxin-like PCB's in oil and fat products, which

- a) originate from the processing of oil seed, oil refining, animal fat processing and/or fat blending, and;
- b) are used in feed, and;
- c) are produced, traded, stored, transported or used by GMP+ certified companies.

#### 5.1.2. Application

This monitoring applies to GMP+ certified companies that produce or trade the products mentioned under § 5.1.1..

GMP+ certified companies are exempt from monitoring if they dispose of an analysis result, covering the purchased batch (unique reference of the batch must be included in the analysis report).

---

<sup>4</sup> These requirements are based on EU-legislation, as laid down in Reg. (EU) No. 183/2005 (Appendix II) including the amendments regulated by Regulation (EU) No. 2015/1905.

## 5.2. Monitoring frequency

It is important to highlight that the monitoring frequencies, as is specified in the following tables, are not meant to substitute the individual feed business operator’s HACCP system, and do not exempt a feed business operator from applying the HACCP principles, which includes the establishing of an adequate monitoring plan. This monitoring plan must, at least, include the minimum monitoring frequency laid down in the following tables as follows:

Class	1	2	3	4
Product	Not allowed for feed. Included in the tables for reason of transparency and completeness  See also TS 1.4 <i>Forbidden Products and Fuels</i>	Product for use in feed	Product for use in feed	Product for use in feed
Monitoring frequency	Not applicable.	100% monitoring with a Positive Release. <sup>5</sup>  One analysis per batch (max.1000 tons <sup>6</sup> )	One representative analysis per 2000 tons or 5000 tons <sup>6,7</sup> (with a minimum of one representative analysis per year)	Based on the company’s internal hazard analysis
Rationale	Products are forbidden for feed	The presence of dioxins and dioxin-like PCB’s is possible	The presence of dioxins and dioxin-like PCB’s is unlikely	The presence of dioxins and dioxin-like PCB’s is highly unlikely

The labeling of feed materials that fall under this monitoring must – where possible – use the names listed in Regulation (EU) no. 68/2013 (European Catalogue of feed materials). Such a name ensures that the product is identified with certainty and to determine the monitoring (class 1, 2, 3 or 4) to which this feed material has been subjected with maximum precision.

In case the name used is not included in Regulation (EU) no. 68/2013, only monitoring conform product class 1 (forbidden products) or product class 2 can be applied.

<sup>5</sup> Several options as regards acceptable Positive Release systems are provided in § 5.3

<sup>6</sup> If can be demonstrated that a homogenous consignment is bigger than the maximum batch size and has been sampled in a representative way, the results of the analysis, of the appropriately drawn and sealed sample, will be considered acceptable.

<sup>7</sup> Applicable to producers and, if appropriate, traders:

- one representative analysis per 2000 tons for specific fish oils
- one representative analysis per 5000 tons for specific animal fats (cat-3)

with a minimum of one representative analysis per year. See tables below.

At the latest at the time of delivery, a statement that the representative analyses are carried out will be provided to the buyer. The buyer will be periodically informed of the results of these analyses.



Class 3 or class 4 monitoring can only be applied for products of which the name is included in the European Catalogue of feed materials and for which a product class 3 or 4 has been identified in the tables above.

**+** Helpful tip:

See Appendix 1 for a list of relevant products with names, description and EU catalogue numbers

The monitoring must be carried out in accordance with the class as specified in the table below:

How to read	
EU Food	A producer that is registered (according to art. 6 of Reg. (EC) No. 852/2004) as an EU food operator.
Other	A producer not registered (according to art. 6 of Reg. (EC) No. 852/2004) as an EU food operator.

Table 1: Products <sup>8</sup> of vegetable origin	EU food	Other
See TS1.4 <i>Forbidden products and fuels</i> for oil/fat products not allowed in feed	1	1
Fatty acids distillates (13.6.5)	2	2
Deodistillates, treated	2	2
Acid oils from chem. refining (13.6.1)	4	2
Fatty acids esterified with glycerol (13.6.2) Mono, di and tri glycerides of fatty acids (13.6.3/13.6.9) Salts of fatty acids (13.6.4) Crude fatty acids from splitting (13.6.6) Pure distilled fatty acids from splitting (13.6.7) Sucrose esters of fatty acids (13.6.10) Sucroglycerides of fatty acids (13.6.11)	4	See Appendix 1
Glycerin (13.8.1/13.8.2), Lecithin (2.21.1) and Gums Used filter aids/use bleaching earth Soap stocks (13.6.8) Vegetable oil/fat, crude and refined except for crude coconut oil (2.20.1)	4	4
Crude coconut oil if supplied as feed material (2.20.1)	2	2
Oils/fats recovered from food business operators (2.20.2)	2	2
Other oil/fats products derived from a biodiesel production process out of a non-refined feedstock <sup>9</sup>	2	2
Imported tocopherols extracted from vegetable oil and tocopheryl acetate made thereof <sup>10</sup>	2	2

<sup>8</sup> These products come from different processes like refining, oleochemical and biodiesel production

<sup>9</sup> In the context of this protocol a feedstock is the raw material from which the oil/fat product is produced or derived thereof

<sup>10</sup> Import from outside the European Union (EU) to the EU and imports between non-EU member states



<b>Table 2: Products of animal origin</b>	
See TS1.4 <i>Forbidden products and fuels</i> for oil/fat products not allowed in feed	1
<b>Animal fat from land animals</b>	
Animal fat processors, edible fats and oils, (Regulation (EC) 853/2004) (9.2.1)	3
Cat. 3 operators, fats and oils, (Regulation (EC) 1069/2009) (9.2.1)	3
Acid oils (13.6.1) & soap stocks	3
Deodistillates, treated	2
Fatty acid distillates (13.6.5)	2
Fat from gelatin production	2
<b>Product from fish oil processing</b>	
Crude fish oil (10.4.6)	2
Fish oil, produced from fisheries with no monitoring history, from unspecified origin or from the Baltic Sea (10.4.6)	2
Fish oil, from fish by-products from non-EU approved establishments manufacturing fish for human consumption (10.4.6)	2
Fish oil, produced from blue whiting or menhaden (10.4.6)	2
Products derived from fish oil which is neither refined nor listed in this table (including fish oil refinery by-products )	2
Soap stocks (13.6.8) and acid oils (13.6.1) from fish oil	2
Refined fish oil (and all other fish oils not specified above) (10.4.6)	3

<b>Table 3: Products from fat blending <sup>11</sup></b>	
See TS1.4 <i>Forbidden products and fuels</i> for oil/fat products not allowed in feed	1
<b>Incoming products</b>	See tables 1 and 2
<b>or</b>	
<b>Outgoing blends of fats/oils</b>	2

Note: Instead of monitoring incoming batches according to these classifications, a fat blender may choose to monitor 100% of outgoing batches (= class 2). This choice needs to be declared to the auditor. EU-located feed business need also to declare the choice to the competent authority.

<sup>11</sup> See for definition of fat blending F0.2 Definition list



### 5.3. Positive release

To comply with the Positive Release requirements, GMP+ certified companies (producers and, if appropriate, traders, see § 5.1.2) within the supply chain, may use several systems. In this section, a number of systems, are explained. These systems are allowed to be used by GMP+ certified companies, active within the supply chain. However, if the competent authority, or a customer, has additional requirements, these must also be satisfied.

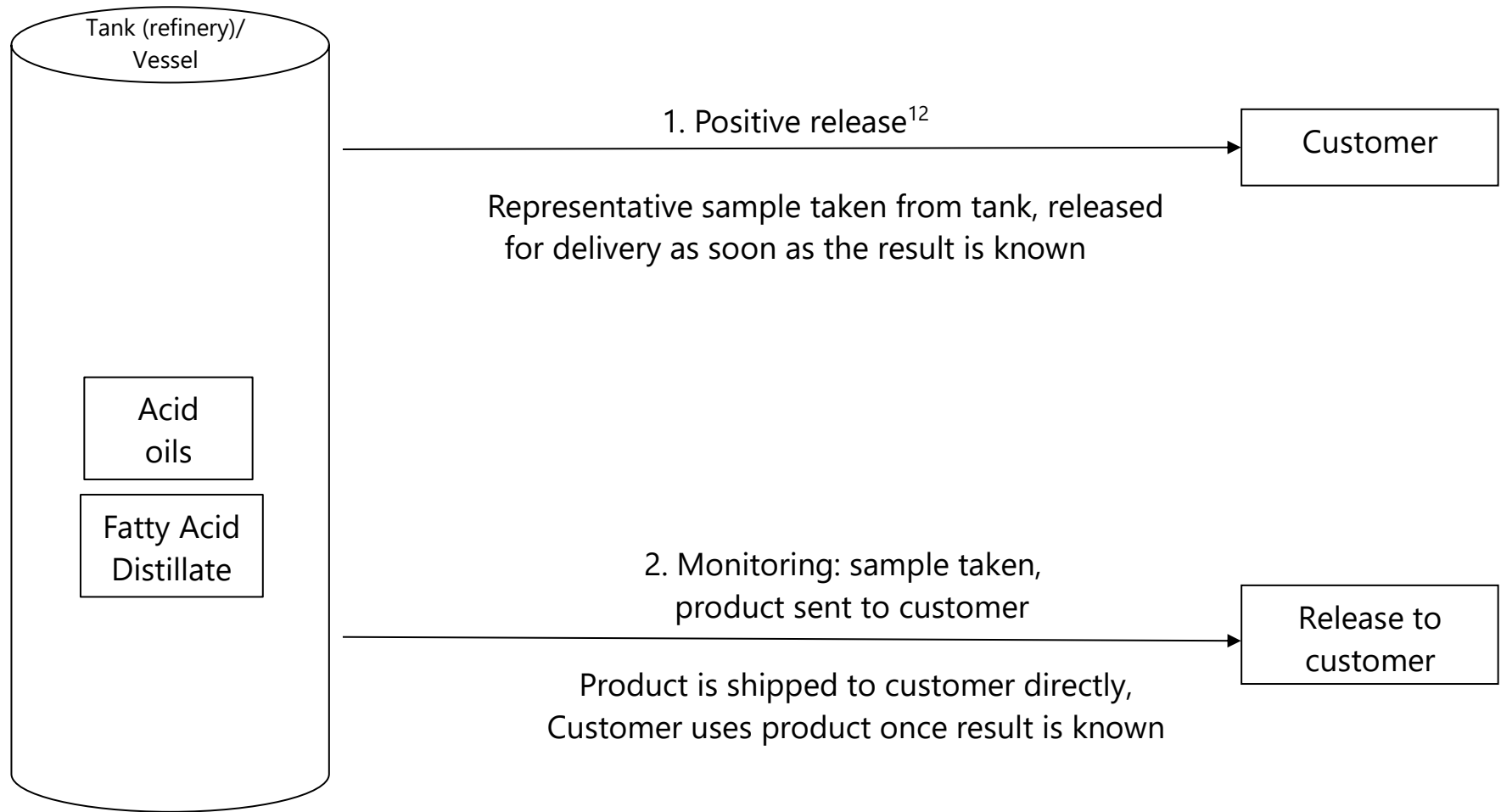
The analysis results of dioxins and dioxin-like PCBs must be available, before any use in feed materials such as compound feed and premixtures.

*Note: with 'shipped' is meant that the product is transported from the producer's facility to (for example) a storage tank, located at the customer's facility. The producer, still owns the product and is therefore responsible for the product. With 'delivered' is meant that the product is not only transported to the customer, but also the ownership of the product is transferred to the customer.*

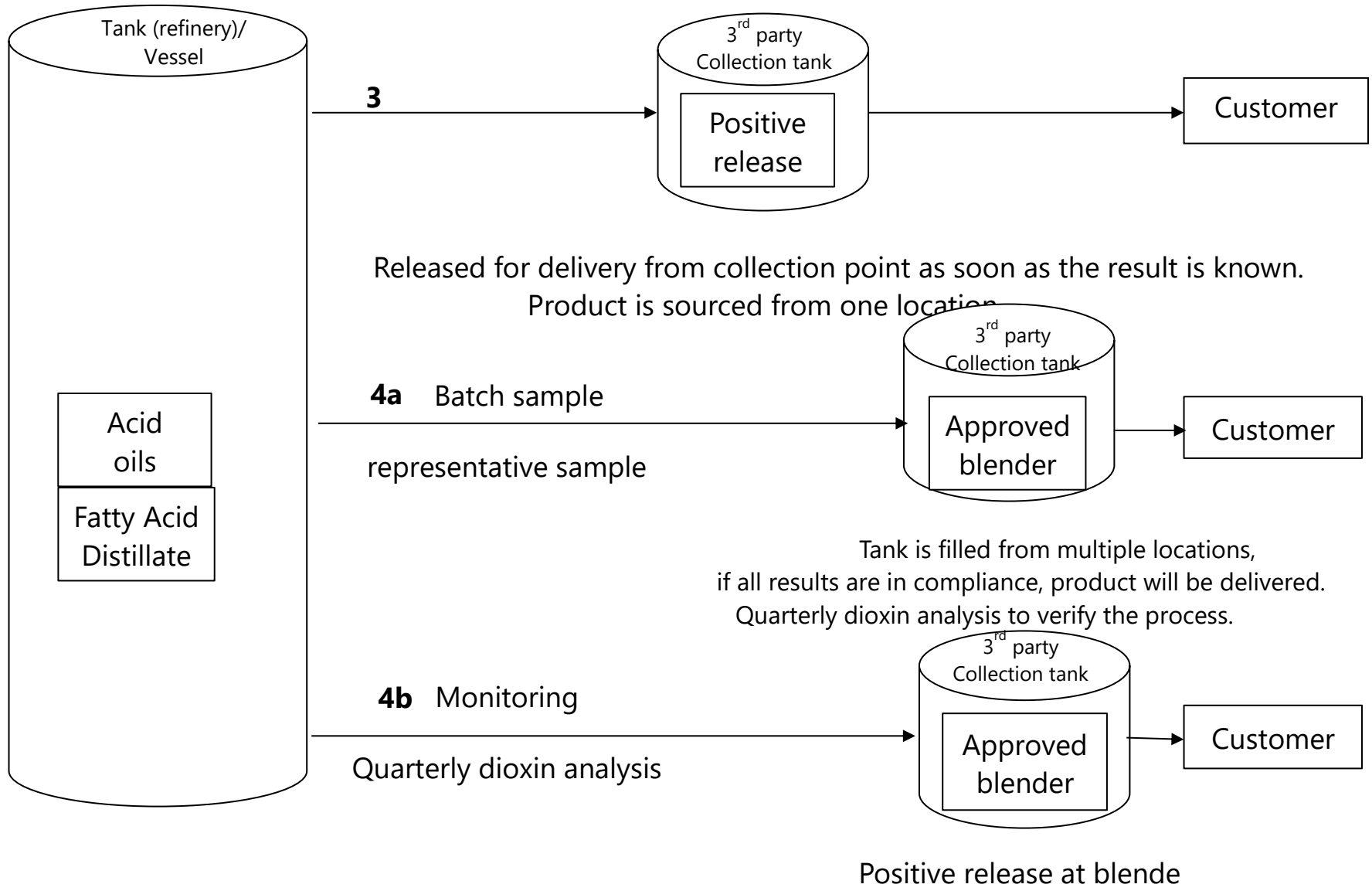
No.	Option	Remarks
1	The producer, takes a representative sample of the product located at his storage tank, he then sends the sample to a laboratory for the analysis of dioxin and dioxin-like PCBs. The product is shipped, and delivered to the customer, once the test results are known, and are within the specifications.	For more details as regards sampling and analysis, see § 5.4. Customer must be informed of the results, through means of an Analytical Report.
2	The producer takes a representative sample of the product, located at his storage tank, he then sends the sample to a laboratory for an analysis as regards dioxin and dioxin-like PCBs. Meanwhile, the product is shipped to the customer. The actual delivery of the product (transfer of ownership) will take place once the dioxin analysis results are known and are within the specifications.	For more details as regards sampling and analysis, see § 5.4. In order to use this option, there must be an agreement between the producer and the customer. The customer must be informed of the analysis results, through means of an Analytical Report.

No.	Option	Remarks
3	<p>The producer ships the product (from one plant) to a collection tank (located at another site). This can be a tank; located at his own facilities, or at a third-party tank. Sampling, will be performed in the collection tank. The collection tank is exclusively filled with one single batch. The tank can be loaded discontinuously, e.g. by truck, or by vessel, but the sum of the individual loads, loaded in the tank must correspond with the continuous production of a single plant.</p> <p>The product, will only be delivered from this tank to the customer, if the results of the dioxin and dioxin-like PCB's analysis are known.</p>	<p>One single kind of fat/oil product. One producer/one production plant. Although the product is shipped from the production plant, the producer remains responsible for the required monitoring. He must arrange the proper corrective actions, if the analysis results exceed the product standards. The tank does not necessarily have to be located in the same country as the production site. The producer must have full control of the operational storage activities, or must have an agreement with the storage company, upon use of a third-party tank. Registration of production, transport and storage must be clear and show a complete balance. See for more details about sampling and analysis § 5.4. The customer must be informed of the analysis results, by means of an Analytical Report.</p>
4a	<p>The producer ,must take a representative sample for the analysis of dioxin and dioxin-like PCB's, before the products leave the production facility. The products are then shipped to a collection tank (which may be located at their own facilities, or with a third-party tank).</p> <p>When all samples, representing the contents of the tank, are falling within the required limits, as regards dioxin and dioxin-like PCB's, the product may then be delivered, from the third-party collection tank, to the customers.</p> <p>For verification purposes, the producer will take a sample of the blend from the collection tank on a</p>	<p>This option, is only valid in case that product, delivered to the customer, is a feed material. When the product is a compound feed, this option 4a is not applicable. There may be more than one production plant involved, also from other producers. Although the product is shipped from the production plant, the producer stays responsible for the required monitoring. He must have arranged for proper corrective actions, in case the results of analysis exceed the product standards. The tank does not necessarily have to be located in the same country as the production site. The producer must have full control of the operational storage activities, or must have an agreement with the storage company, upon use of a third-party tank.</p>

No.	Option	Remarks
	<p>quarterly basis, for the analysis of dioxin and dioxin-like PCB's.</p> <p>In case the contents of the tank, are not composed with batches, originating from one single production facility (option 3), the legal entity, operating the tank, will need to have an approval, as a fat blending operator.</p>	<p>The registration of production, transport and storage, must be clear, and must provide a complete balance.</p> <p>The file containing the analysis certificates must be complete, and must be clear.</p> <p>The customer must be informed of the analysis results, by means of all underlying analysis results, and the composition (including the proportion of the different components), unless the producer and customer agree, that the customer must be informed by means of a Conformity Note. The contents of the Conformity Note must be clear, unambiguous and verifiable. There must be a clear link between the Conformity Note, the delivered batch and the analysis certificates.</p> <p>The producer is responsible for the quarterly add-on monitoring.</p>
4b	<p>Fat blending: different producers (which can be different plants and/or different legal entities), will deliver the product to the third-party collection tank. Sampling, will take place in the collection tank, at the fat blender's facilities, after production of the fat blend.</p> <p>Each individual producer will monitor all products shipped to the third-party collection tank, via quarterly sampling (as an add-on to monitoring required). The individual producers are obliged to provide the monitoring results to the fat blender.</p>	<p>This option is mandatory, if the fat product is a compound feed.</p> <p>The product could be one single kind of fat/oil product, or a mixture of different fat/oil products.</p> <p>Product is owned by fat blender.</p> <p>The tank does not necessarily have to be located in same country as the production site.</p> <p>The producer must have full control of the operational storage activities, or must have an agreement with the storage company, upon use of a third-party tank.</p> <p>The fat blender is responsible for the quarterly add-on monitoring.</p> <p>The registration of production, transport and storage must be clear and provide a complete balance.</p> <p>The file, containing the analysis certificates must be complete and must be clear.</p> <p>The customer must be informed of the analysis results, by means of an Analytical Report of blend.</p>



<sup>12</sup> Example 1 to 4b: positive release not necessary in case the blend consists for 100% out of Acid Oils.



## 6. Monitoring protocol for By-products of the oils and fats industry

### 6.1. General requirements

#### 6.1.1. Scope

Any product derived directly or indirectly from crude or recovered oils and fats by oleochemical or biodiesel processing or distillation, chemical or physical refining, other than:

- refined oils,
- products derived from refined oils,
- feed additives,

to be used in feed, from any origin.

The next products are out of scope:

- a) products, produced by an EU registered food operator
- b) crude or pure distilled fatty acids (13.6.6/13.6.7) derived from vegetable oil (2.20.1)
- c) products derived from fatty acids, covered under b

*Note: See Appendix 1 for more details about products in scope of this protocol.*

 **Helpful tip:**

'To be used in feed': it does not matter under which specification/status the product is purchased. If destination is feed, the relevant requirements in this document TS 1.7 *Monitoring* apply.

#### 6.1.2. Application

This protocol must be applied by GMP+ certified companies that:

- produce by-products (mentioned in 6.1.1) from the oil and fat industry.
- Trade / import by-products (mentioned in 6.1.1) from the oil and fat industry.

This protocol is not applicable for GMP+ certified companies that produce compound feed which is to be delivered to a livestock farmer.

### 6.2. Definitions

Term	Explanation
MONG	Matter Organic Non-Glycerol MONG is a residue from glycerin, meaning the vegetable fat-like residues (e.g. triglycerides and fatty acids) from the refining of vegetable glycerin. MONG also contains glycerin, salts and water. So basically everything that is not glycerol / glycerin. This is usually a small percentage that is still in the raw glycerin (defined as 100 less the sum of the percentages of glycerol, ash and water). With further processing of the glycerin, MONG is removed and is thus a byproduct of the glycerin refining. See also F 0.2 <i>Definition list</i> .

### 6.3. Monitoring frequency

Batch by batch, 100% positive release. Batches/lots must be monitored before used in feed. Producer of the by-product is responsible unless agreed (in contract or another official document) to transfer this responsibility for monitoring to his customer. They must also agree that results are shared. Representative monitoring results need to accompany any delivered batch, also to customers.

### 6.4. Sampling

When shipped by sea vessel or barge

- Shipment to be carried out under a well-known, in the international trade accepted contract (FOSFA, NOFOTA, GROFOR) to assure
  - o Independent supervision
  - o Sampling per lot
  - o Safe previous cargoes and technical equipment
- When shipped by vehicles (tank/container):
  - o Sampling of each truck

### 6.5. Analysing

The below mentioned parameters must be analysed

- Fatty Acid profile
- Moisture and impurities
- Free Fatty Acid
- Dioxins, dioxin-like PCBs, non-Dioxin-like PCBs
- Pesticides
- Heavy metals (Arsenic, Cadmium, Mercury, Lead and Nickel)
- Mineral oil hydrocarbons (C10-C40)
- PAH's

#### 6.5.1. Information to the client

Information, which is generated as a result of application of this Appendix, must be unambiguous and must accompany every batch / shipment to demonstrate that requirements have been met.

# Appendix 1: Product name and Number according to Reg. (EU) No 68/2013

## How to read

Reference is made to this appendix from both chapter 5 and chapter 6. It is good to keep the following in mind:

### Chapter 5:

Chapter 5 gives the minimum frequency for analyzing dioxin and dioxin-like PCBs. For most oil and fat products the minimum frequency is stated in the tables in chapter 5. In this appendix 1 the classification for monitoring is only given for those products which are not classified in the tables in protocol 5, for companies which do not have a EU food registration ('other').

### Chapter 6:

Chapter 6 requires (additional to chapter 5) for a few oil and fat product (from certain origin and from certain feedstocks) the minimum analysis frequency for a number of parameters. Oil and fat products within scope are indicated with 'yes' in the column 'Within scope of § 6'.

Number	Name	Description	§ 5 Class for 'other'	In scope of § 6	Remarks/examples of products falling under this number
1.2.13	Crude maize germ oil	Product obtained from maize germ		No	
1.6.13	Rice bran oil	Oil extracted from stabilised rice bran		No	
2.20.1	Vegetable oil and fat <sup>(2)</sup>	Oil and fat obtained from plants (excluding castor oil from the ricinus plant), it may be degummed, refined and/or hydrogenated.		No	Palm oil stearin fraction; Rape seed stearin fraction; Sunflower stearin fraction
2.20.2	Used food factory vegetable oils	Vegetable oils having been used by food business operators in accordance with Regulation (EC) No 852/2004 for cooking purposes and which have not been in contact with meat, animal fats, fish or aquatic animals.		No	



Number	Name	Description	§ 5 Class for 'other'	In scope of § 6	Remarks/examples of products falling under this number
2.21.1	Crude lecithins	Product obtained during degumming of crude oil from oilseeds and oil fruits with water. Citric acid, phosphoric acid, sodium hydroxide or enzymes may be added during degumming of the crude oil.		No	
2.22.3	Hemp oil	Oil obtained by pressing of hemp plants and seeds		No	
7.1.4	Algal oil <sup>(1)</sup>	Oil obtained by extraction from algae. May contain up to 0,1 % antifoaming agents.		No	
9.2.1	Animal fat	Product composed of fat from land animals, including invertebrates other than species pathogenic to humans and animals in all their life stages. If extracted with solvents, may contain up to 0,1 % hexane.		No	
10.4.6	Fish oil	Oil obtained from fish or parts of fish followed by centrifugation to remove water (may include species specific details e.g. cod liver oil).		No	
10.4.7	Fish oil, hydrogenated	Oil obtained from hydrogenation of fish oil		No	
13.6.1	Acid oils from chemical refining <sup>(3)</sup>	Product obtained during the deacidification of oils and fats of vegetable or animal origin by means of alkali, followed by an acidulation with subsequent separation of the aqueous phase, containing free fatty acids, oils or fats and natural components of seeds, fruits tissues such as mono- and diglycerides, crude lecithin and fibres.	2	Yes	
13.6.2	Fatty acids esterified with glycerol <sup>(4)</sup> derived from		4	No	

Number	Name	Description	§ 5 Class for 'other'	In scope of § 6	Remarks/examples of products falling under this number
	13.6.6 or 13.6.7, produced from vegetable oil (2.20.1) <sup>14</sup>	Glycerides obtained by esterification of fatty acids with glycerol. May contain up to 50 ppm Nickel from hydrogenation.			
	Fatty acids esterified with glycerol <sup>(4)</sup> , derived from 13.6.6 or 13.6.7, produced from other feedstock <sup>14</sup>		2	Yes	
13.6.3	Mono di and tri glycerides of fatty acids <sup>(4)</sup> , derived from 13.6.6 or 13.6.7, produced from vegetable oil (2.20.1) <sup>14</sup>	Product consisting of mixtures of mono-, di- and triesters of glycerol with fatty acids. They may contain small amounts of free fatty acids and glycerol. May contain up to 50 ppm Nickel from hydrogenation.	4	No	
	Mono di and tri glycerides of fatty acids <sup>(4)</sup> , derived from 13.6.6 or 13.6.7, produced from other feedstock <sup>14</sup>		2	Yes	
13.6.4	Salts of fatty acids <sup>(4)</sup> , derived from 13.6.6 or 13.6.7, produced from vegetable oil (2.20.1) <sup>14</sup>	Product obtained by reaction of fatty acids with at least four carbon atoms with calcium, magnesium, sodium or potassium hydroxides, oxides or salts. May contain up to 50 ppm Nickel from hydrogenation.	4	No	Analysis must be done on the fat component (e.g. PFAD) or on the end-product.
	Salts of fatty acids <sup>(4)</sup> , derived from 13.6.5, or salts of fatty acids <sup>(4)</sup> , derived from 13.6.6 or 13.6.7, produced from other feedstock <sup>14</sup>		2	Yes	
13.6.5	Fatty acid distillates from physical refining <sup>(3)</sup>	Product obtained during the deacidification of oils and fats of vegetable or animal origin by means of distillation containing free fatty acids, oils or fats and natural components of seeds, fruits tissues such as	2	Yes	

Number	Name	Description	§ 5 Class for 'other'	In scope of § 6	Remarks/examples of products falling under this number
		mono- and diglycerides, sterols and tocopherols.			
13.6.6	Crude fatty acids from splitting <sup>(3)</sup> produced from vegetable oil (2.20.1) <sup>15</sup>	Product obtained by oil/fat splitting. By definition it consists of crude fatty acids C <sub>6</sub> -C <sub>24</sub> , aliphatic, linear, monocarboxylic, saturated and unsaturated. May contain up to 50 ppm Nickel from hydrogenation.	4	No	
	Crude fatty acids from splitting <sup>(3)</sup> produced from other feedstock <sup>15</sup>		2	Yes	
13.6.7	Pure distilled fatty acids from splitting <sup>(3)</sup> , produced from vegetable oil (2.20.1) <sup>15</sup>	Product obtained by the distillation of crude fatty acids from oil/fat splitting potentially plus hydrogenation. By definition it consists of pure distilled fatty acids C <sub>6</sub> -C <sub>24</sub> , phatic, linear, monocarboxylic, saturated and unsaturated. May contain up to 50 ppm Nickel from hydrogenation.	4	No	Ricin oleic acid (syn. Castor oil acid), CAS no.141-22-0, EC no. 205-470-2 Icosa-5,8,11,14-tetraenoic acid (syn. Arachidonic acid), CAS no. 506-32-1, EC no. 208-033-4; Hexanoic acid (syn. Caproic acid ) of vegetable origin, CAS no.142-62-1, EC no. 205-550-7; Octanoic acid (syn. Caprylic acid) of vegetable origin, CAS no.124-07-2, EC no. 204-677-5; Oleic acid (syn. octadec-9-enoic acid) of vegetable origin, CAS no. 112-80-1, EC no. 204-007-1; Linoleic acid (syn. 9,12-Octadecadienoic acid), CAS no. 60-33-3, EC no. 200-470-9; Linolenic acid (syn. (9Z,12Z,15Z)-9,12,15-Octadecatrienoic acid), CAS no. 463-40-1, EC no. 207-334-8; Stearic acid (syn. octadecanoic acid) of vegetable origin, CAS no. 57-11-4, EC no. 200-313-4
	Pure distilled fatty acids from splitting <sup>(3)</sup> , produced from other feedstock <sup>15</sup>		2	Yes	
13.6.8	Soap stocks <sup>(3)</sup>	Product obtained during the deacidification of vegetable oils and fats by means of		No	

Number	Name	Description	§ 5 Class for 'other'	In scope of § 6	Remarks/examples of products falling under this number
		aqueous calcium, magnesium, sodium or potassium hydroxide solution, containing salts of fatty acids, oils or fats and natural components of seeds, fruits or animal tissues such as mono- and diglycerides, crude lecithin and fibres.			
13.6.9	Mono- and diglycerides of fatty acids esterified with organic acids <sup>(4)</sup> <sup>(5)</sup> , derived from 13.6.6 or 13.6.7, produced from vegetable oil (2.20.1) <sup>14</sup>	Mono- and diglycerides of fatty acids with at least four carbon atoms esterified with organic acids.	4	No	
	Mono- and diglycerides of fatty acids esterified with organic acids <sup>(4)</sup> <sup>(5)</sup> , derived from 13.6.6 or 13.6.7, produced from other feedstock <sup>14</sup>		2	Yes	
13.6.10	Sucrose esters of fatty acids <sup>(4)</sup> , derived from 13.6.6 or 13.6.7, produced from vegetable oil (2.20.1) <sup>14</sup>	Esters of saccharose and fatty acids.	4	No	
	Sucrose esters of fatty acids <sup>(4)</sup> , derived from 13.6.6 or 13.6.7, produced from other feedstock <sup>14</sup>		2	Yes	

Number	Name	Description	§ 5 Class for 'other'	In scope of § 6	Remarks/examples of products falling under this number
13.6.11	Sucroglycerides of fatty acids <sup>(4)</sup> , derived from 13.6.6 or 13.6.7, produced from vegetable oil (2.20.1) <sup>14</sup>	Mixture of esters of saccharose and mono and di-glycerides of fatty acids.	4	No	
	Sucroglycerides of fatty acids <sup>(4)</sup> , derived from 13.6.6 or 13.6.7, produced from other feedstock <sup>14</sup>		2	Yes	
13.8.1	Glycerine, crude [Glycerol, crude]	<p>By-product obtained from:</p> <ul style="list-style-type: none"> <li>- the oleochemical process of oil/fat splitting to obtain fatty acids and sweet water, followed by concentration of the sweet water to get crude glycerol or by transesterification (may contain up to 0,5 % methanol) of natural oils/fats to obtain fatty acid methyl esters and sweet water, followed by concentration of the sweet water to get crude glycerol;</li> <li>- the production of biodiesel (methyl or ethyl esters of fatty acids) by transesterification of oils and fats of unspecified vegetable and animal origin. Mineral and organic salts might remain in the glycerine (up to 7,5 %).</li> </ul> <p>May contain up to 0,5 % Methanol and up to 4 % of Matter Organic Non Glycerol (MONG) comprising of Fatty Acid Methyl</p>		No	

Number	Name	Description	§ 5 Class for 'other'	In scope of § 6	Remarks/examples of products falling under this number
		Esters, Fatty Acid Ethyl Esters, Free Fatty Acids and Glycerides; <ul style="list-style-type: none"> <li>- saponification of oils/fats of vegetable or animal origin, normally with alkali/alkaline earths, to obtain soaps.</li> </ul> May contain up to 50 ppm Nickel from hydrogenation.			
13.8.2	Glycerine [Glycerol]	Product obtained from: <ul style="list-style-type: none"> <li>- the oleochemical process of (a) oil/fat splitting followed by concentration of sweet waters and refining by distillation (see part B, glossary of processes, entry 20) or ion-exchange process; (b) transesterification of natural oils/fats to obtain fatty acid methyl esters and crude sweet water, followed by concentration of the sweet water to get crude glycerol and refining by distillation or ion-exchange process;</li> <li>- the production of biodiesel (methyl or ethyl esters of fatty acids) by transesterification of oils and fats of unspecified vegetable and animal origin with subsequent refining of the glycerine. Minimum Glycerol content: 99 % of dry matter;</li> <li>- saponification of oils/fats of vegetable or animal origin, normally with alkali/alkaline earths, to obtain soaps,</li> </ul>		No	

Number	Name	Description	§ 5 Class for 'other'	In scope of § 6	Remarks/examples of products falling under this number
		followed by refining of crude Glycerol and distillation. May contain up to 50 ppm Nickel from hydrogenation.			
13.11.1	Propylene glycol; [1,2-propanediol]; [propane- 1,2-diol]	Organic compound (a diol or double alcohol) with formula C <sub>3</sub> H <sub>8</sub> O <sub>2</sub> . It is a viscous liquid with a faintly sweet taste, hygroscopic and miscible with water, acetone, and chloroform. May contain up to 0,3 % di-propylene glycol.		No	
13.11.2	Mono-esters of propylene glycol and fatty acids <sup>(4)</sup>	Mono-esters of propylene glycol and fatty acids, alone or in mixtures with di-ester	2	Yes	

**Explanation:**

<sup>14</sup> This product is out of scope of § 6 only in case produced/derived from fatty acids covered under 13.6.6 or 13.6.7, which are in their turn obtained by splitting of vegetable oil falling under the Catalogue of feed materials number 2.20.1.

<sup>15</sup> The products 13.6.6 and 13.6.7 are out of scope of § 6 only in case the feedstock used to produce these products is vegetable oil falling under the Catalogue of feed materials number 2.20.1. When other products are used as the feedstock,, the products 13.6.6 and 13.6.7 are within scope of § 6.

- ( 1 ) The name must be supplemented by the species.
- ( 2 ) The name must be supplemented by the plant species.
- ( 3 ) The name must be supplemented by the indication of the botanical or animal origin.
- ( 4 ) The name must be amended or supplemented to specify the fatty acids used.
- ( 5 ) The name must be amended or supplemented to specify the organic acid.



## Feed Support Products

That was a lot of information to digest and one might ask, what is the next step? Luckily we can offer support for the GMP+ Community when doing this. We provide support by means of various tools and guidances but as each company has a shared responsibility to feed safety, and therefore tailor-made solutions cannot be offered. However, we do help by explaining requirements and provide background information about the requirements.

We have developed various supporting materials for the GMP+ Community. These include various tools, ranging from Frequently Asked Questions (FAQ) lists to webinars and events.

### **Supporting materials related to this document (Guidelines and FAQ's)**

We have made documents available which give guidance to the GMP+ requirements as laid down in the module GMP+ FSA and GMP+ FRA. These documents give examples, answers to frequently asked questions or background information.

### **GMP+ Monitoring database**

The GMP+ Monitoring database contains analysis results from you and other users. It is possible to generate reports based on this data. We have a manual and a frequently asked questions document available.

## Where to find more about the GMP+ International Feed Support Products

### **Fact sheets**

More information: <https://www.gmpplus.org/en/services/feed-support-products/fact-sheets/>

Review fact sheets: GMP+ Portal <https://gmpplus.org/en/feed-certification-scheme-2020/gmp-fsa-fra-certification/support/>

### **GMP+ Monitoring database**



At GMP+ International, we believe everybody, no matter who they are or where they live, should have access to safe food.

**GMP+ International**

Braillelaan 9

2289 CL Rijswijk

The Netherlands

t. +31 (0)70 – 307 41 20 (Office)

+31 (0)70 – 307 41 44 (Help Desk)

e. [info@gmpplus.org](mailto:info@gmpplus.org)

Disclaimer:

This publication has been created in English and translated into multiple languages. In the event of any conflict in interpretation or discrepancy occurs between the English language and any other language, the English language shall prevail.

© GMP+ International B.V.

All rights reserved. The information in this publication may be consulted on the screen, downloaded and printed as long as this is done for your own, non-commercial use. For other desired uses, prior written permission should be obtained from the GMP+ International B.V.